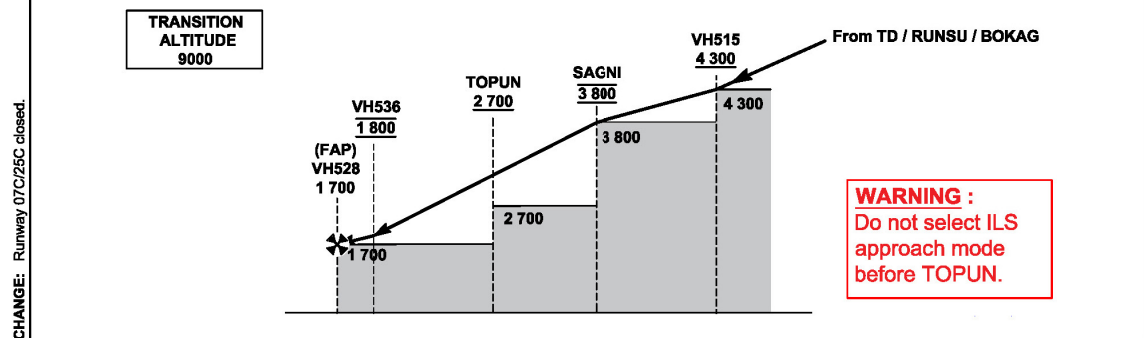
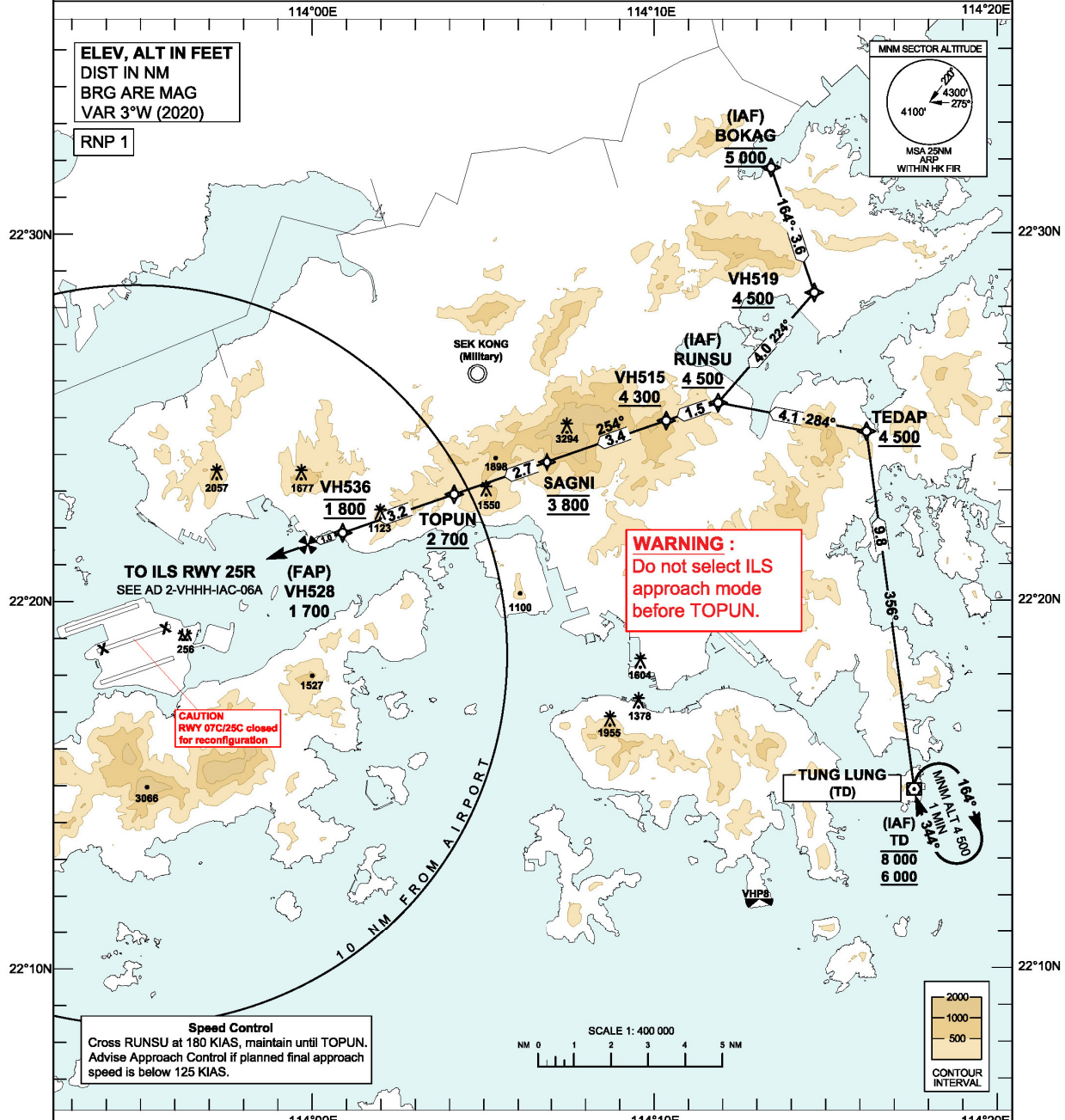


**APPROACH TRANSITION CHART** **VHHH / HONG KONG INTL RNAV TRANSITION TO ILS RWY 25R**

HONG KONG APPROACH	119.1
HONG KONG DIRECTOR	119.5

NOTE 1 RNP 1 is required.  
 NOTE 2 Do not accept radar vectors inside RUNSU.  
 NOTE 3 Due to terrain, strictly comply with all charted altitude restrictions and DESCEND VIA RNAV TRANSITION PROFILE to FAP altitude.



CHANGE: Runway 07C/25C closed.

**RNAV Transition to ILS RWY 25R****TABULAR DESCRIPTION: RNAV Transition from TD**

Serial Number	Path Descriptor	Waypoint Identifier	Fly-over	Course °M (°T)	Magnetic Variation	Distance (NM)	Turn Direction	Altitude (ft)	Speed (KIAS)	VPA	Navigation Specification
01	IF	TD	-	-	+3.0	-	-	-8000 +6000	-	-	RNP 1
02	TF	TEDAP	-	356 (353)	+3.0	9.8	-	+4500	-	-	RNP 1
03	TF	RUNSU	-	284 (281)	+3.0	4.1	L	+4500	@180	-	RNP 1
04	TF	VH515	-	254 (251)	+3.0	1.5	L	+4300	@180	-	RNP 1
05	TF	SAGNI	-	254 (251)	+3.0	3.4	-	@3800	@180	-	RNP 1
06	TF	TOPUN	-	254 (251)	+3.0	2.7	-	+2700	@180	-	RNP 1
07	TF	VH536	-	254 (251)	+3.0	3.2	-	@1800	-	-	RNP 1
08	TF	VH528	-	254 (251)	+3.0	1.0	-	-	@160	-	RNP 1

**TABULAR DESCRIPTION: RNAV Transition from RUNSU**

Serial Number	Path Descriptor	Waypoint Identifier	Fly-over	Course °M (°T)	Magnetic Variation	Distance (NM)	Turn Direction	Altitude (ft)	Speed (KIAS)	VPA	Navigation Specification
01	IF	RUNSU	-	-	+3.0	-	-	+4500	@180	-	RNP 1
02	TF	VH515	-	254 (251)	+3.0	1.5	-	+4300	@180	-	RNP 1
03	TF	SAGNI	-	254 (251)	+3.0	3.4	-	@3800	@180	-	RNP 1
04	TF	TOPUN	-	254 (251)	+3.0	2.7	-	+2700	@180	-	RNP 1
05	TF	VH536	-	254 (251)	+3.0	3.2	-	@1800	-	-	RNP 1
06	TF	VH528	-	254 (251)	+3.0	1.0	-	-	@160	-	RNP 1

**TABULAR DESCRIPTION: RNAV Transition from BOKAG**

Serial Number	Path Descriptor	Waypoint Identifier	Fly-over	Course °M (°T)	Magnetic Variation	Distance (NM)	Turn Direction	Altitude (ft)	Speed (KIAS)	VPA	Navigation Specification
01	IF	BOKAG	-	-	+3.0	-	-	@5000	@210	-	RNP 1
02	TF	VH519	-	164 (161)	+3.0	3.6	-	+4500	-	-	RNP 1
03	TF	RUNSU	-	224 (221)	+3.0	4.0	R	+4500	@180	-	RNP 1
04	TF	VH515	-	254 (251)	+3.0	1.5	R	+4300	@180	-	RNP 1
05	TF	SAGNI	-	254 (251)	+3.0	3.4	-	@3800	@180	-	RNP 1
06	TF	TOPUN	-	254 (251)	+3.0	2.7	-	+2700	@180	-	RNP 1
07	TF	VH536	-	254 (251)	+3.0	3.2	-	@1800	-	-	RNP 1
08	TF	VH528	-	254 (251)	+3.0	1.0	-	-	@160	-	RNP 1

**WAYPOINT LIST**

RNAV Transition to ILS RWY 25R		
Waypoint Identifier	Coordinates (WGS-84)	
TD (IAF)	22 14 52.42N	114 17 35.30E
TEDAP	22 24 35.93N	114 16 13.20E
BOKAG (IAF)	22 31 46.65N	114 13 27.06E
VH519	22 28 23.05N	114 14 42.35E
RUNSU (IAF)	22 25 22.96N	114 11 53.57E
VH515	22 24 53.87N	114 10 22.72E
SAGNI	22 23 46.63N	114 06 52.68E
TOPUN	22 22 54.17N	114 04 09.15E
VH536	22 21 51.55N	114 00 54.18E
VH528 (FAP)	22 21 31.88N	113 59 52.97E