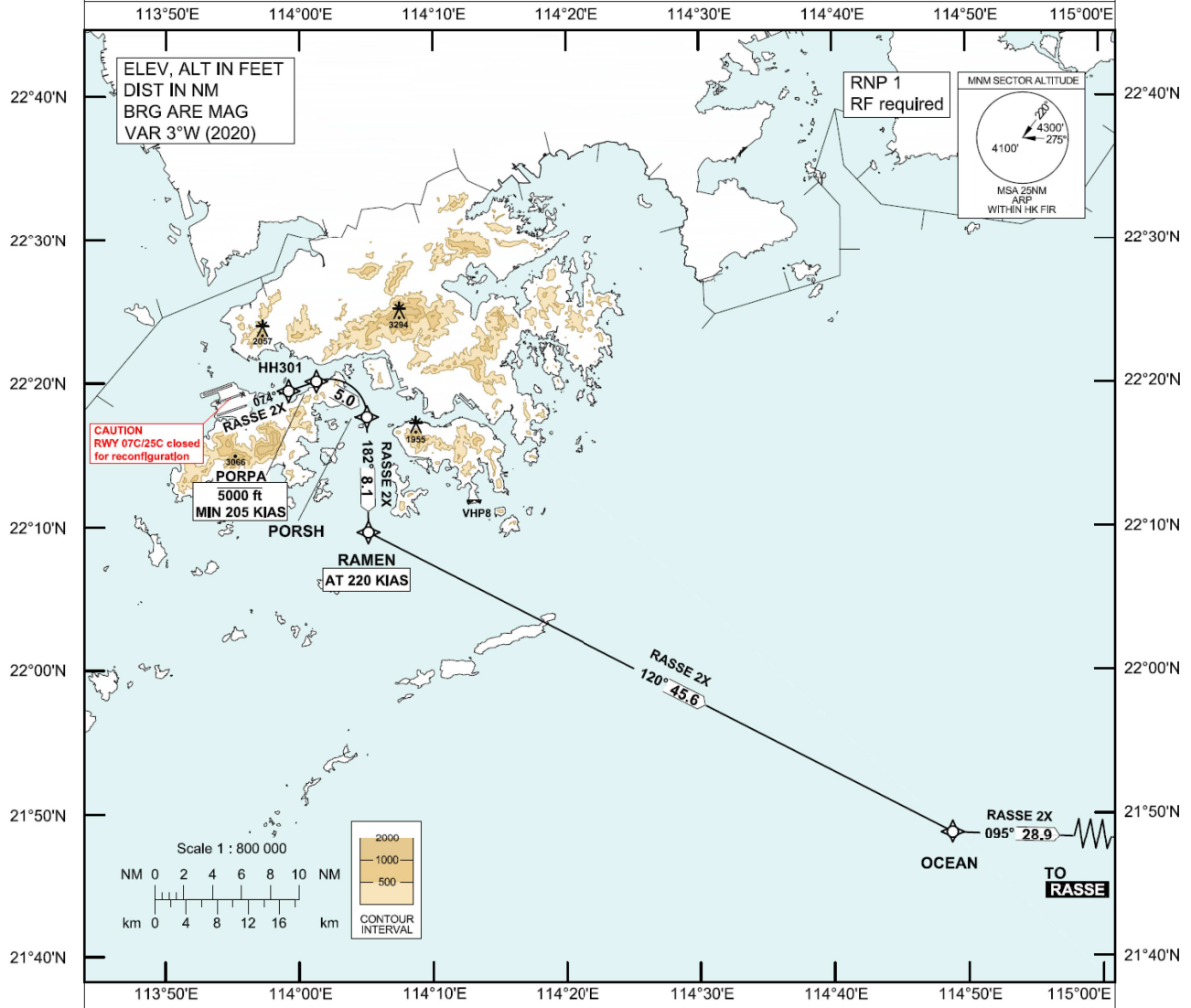


STANDARD DEPARTURE CHART- INSTRUMENT (SID) - ICAO	<table border="1" style="width: 100%; border-collapse: collapse;"> <tr> <td>Transition Altitude 9 000 ft</td> </tr> <tr> <td>Hong Kong Tower 118.4</td> </tr> <tr> <td>Hong Kong Departure 123.8</td> </tr> </table>	Transition Altitude 9 000 ft	Hong Kong Tower 118.4	Hong Kong Departure 123.8
Transition Altitude 9 000 ft				
Hong Kong Tower 118.4				
Hong Kong Departure 123.8				
HONG KONG / Intl (VHHH) RNAV (GNSS) RASSE 2X SID RWY 07R				

1. For RNAV (GNSS) SID, aircraft must be approved by State of Registry in accordance with ICAO RNP 1 standard or equivalent (see GEN 1.5 para 3.5.3). Carriage of certified GNSS receiver is mandatory.
2. In the event that PBN performance ceases to comply with the requirements for RNP 1 after departure, pilots must notify ATC as soon as possible. ATC assistance would be provided as necessary.
3. **Radius-to-fix (RF) leg is required.** Aircraft shall have RF capability as stipulated in the Aircraft Flight Manual or its FMS manual. Aircraft that do not have RF capability shall use RNAV (GNSS) RASSE 4A as detailed in AD-2-VHHH-SID-RASSE-A.
4. **Noise Mitigating SID for use between 1500 - 2300 UTC (see VHHH AD 2.21 para 2.4).**
5. Aircraft with RF capability are encouraged to fly the procedure.



RASSE 2X SID RWY 07R

CLIMB REQUIREMENT
Initial climb to 5 000 ft. Expect further climb when instructed by ATC. Cross PORPA at 5 000 ft or below.

TERRAIN CLEARANCE
Minimum climb gradient of 4.9% (298 ft/NM) until leaving 1 400 ft is required.

SPEED RESTRICTION
Speed restriction of 205 KIAS or greater at PORPA and 220 KIAS until RAMEN.

CHANGE: Revised procedure.

FMC Database Coding Reference for Hong Kong RNAV_(GNSS) SID**TABULAR DESCRIPTION: RASSE 2X RWY 07R (Noise Mitigating Procedure)**

Serial Number	Path Descriptor	Waypoint Identifier	Fly-over	Course °M (°T)	Magnetic Variation	Distance (NM)	Turn Direction	Altitude (ft)	Speed (KIAS)	Navigation Specification
01	CF	HH301	-	074 (071)	+3.0	-	-	-	-	RNP 1
02	TF	PORPA	-	074 (071)	+3.0	2.0	-	-5000	+205	RNP 1
03	RF Centre: VH991 r=2.6485 NM	PORSH	-	-	+3.0	5.0	R	-	-	RNP 1
04	TF	RAMEN	-	182 (179)	+3.0	8.1	-	-	@220	RNP 1
05	TF	OCEAN	-	120 (117)	+3.0	45.6	L	-	-	RNP 1
06	TF	RASSE	-	095 (092)	+3.0	28.9	L	-	-	RNP 1

WAYPOINT LIST

RASSE 2X RWY 07R		
Waypoint Identifier	Coordinates (WGS-84)	
HH301	22 19 29.01N	113 59 11.61E
PORPA	22 20 09.10N	114 01 16.30E
PORSH	22 17 40.38N	114 05 03.56E
RAMEN	22 09 39.22N	114 05 09.89E
OCEAN	21 48 43.00N	114 48 48.00E
RASSE	21 47 34.50N	115 19 49.10E
RF Arc Centre Identifier	Coordinates (WGS-84)	
VH991	22 17 38.37N	114 02 12.21E