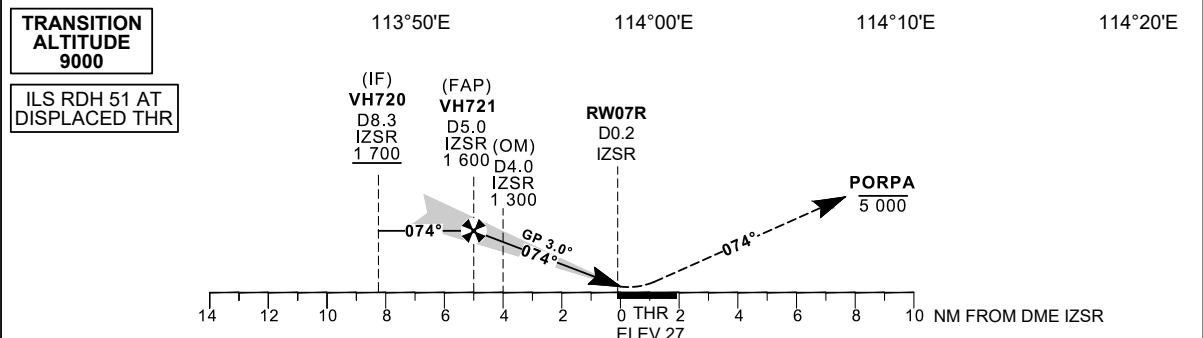
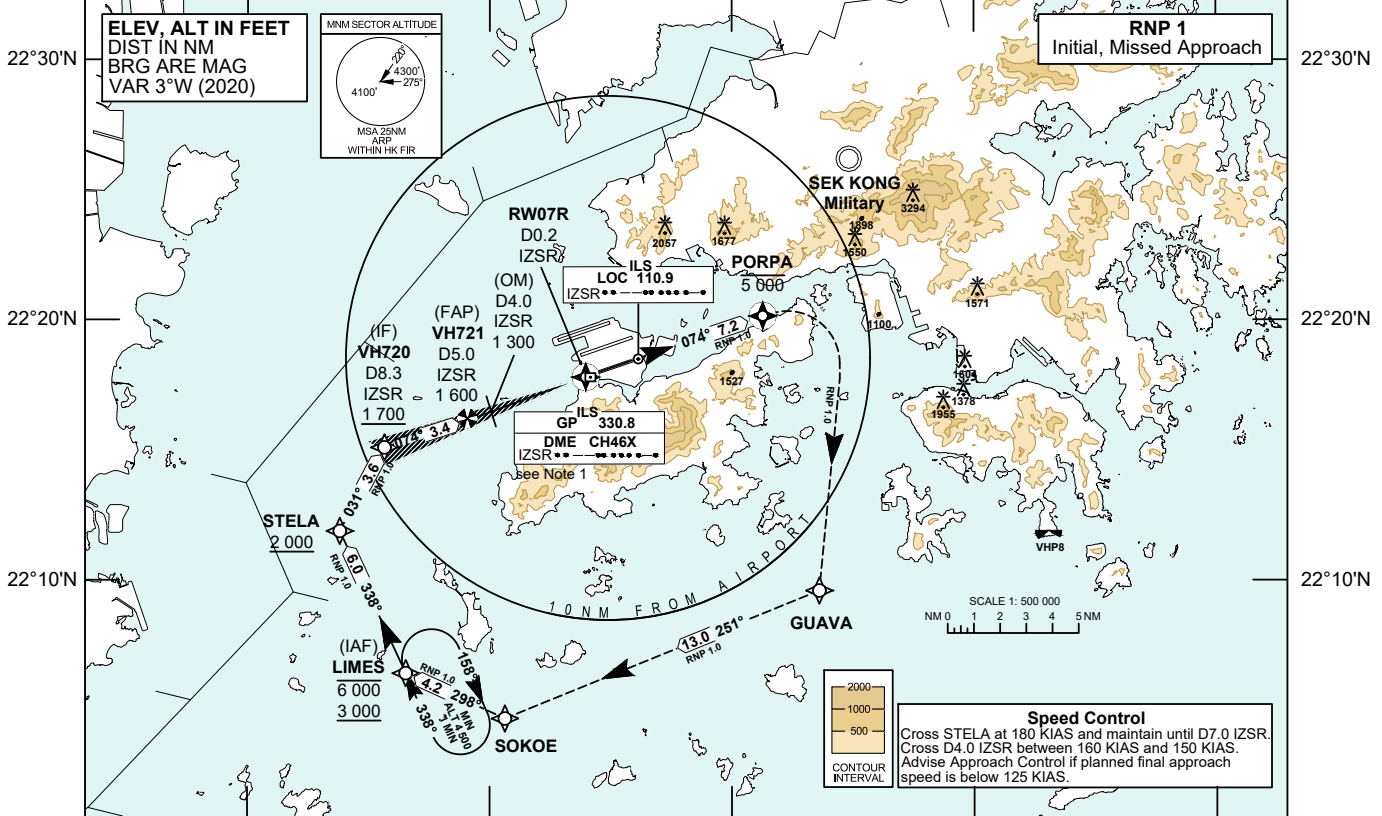


<b>INSTRUMENT APPROACH CHART - ICAO</b>	<b>AERODROME ELEV 28 FT</b>	<b>TOWER</b> 118.4	<b>HONG KONG / INTL (VHHH) ILS RWY 07R CAT II</b>
	HEIGHTS RELATED TO THR RWY 07R - ELEV 27 FT	<b>APPROACH</b> 119.1	

- Warnings**
- LOC IZSR SIGNAL UNUSABLE BEYOND 19° RIGHT OF COURSE
  - GP SIGNAL MAY BE LIABLE TO INTERFERENCE FROM GROUND TRAFFIC DURING CAT I OPERATIONS
- Notes**
- PILOTS SHOULD MONITOR FOR FALSE CAPTURE OF LOC AND GP BY COMPARING INDICATIONS WITH AIRCRAFT POSITION AND ALTITUDE
  - DME is required. If unable to receive IZSR DME pilot shall advise ATC and will receive equivalent radar ranges for FAP (D5.0 IZSR) and OM Fix (D4.0 IZSR).
  - Simultaneous dependent operation is authorized with RWY 07L or RWY 07C.
  - If unable RNP 1, inform ATC accordingly. If unable RNP 1 during missed approach, continue on the published missed approach track, climb and pass Minimum Sector Altitude (MSA) 4 300 ft as soon as practicable, and continue to 5 000 ft.



**MISSED APPROACH**  
 Climb to 5 000 ft. Track to **PORPA**, then turn right direct to **GUAVA**, then **SOKOE**, then **LIMES**. Join **LIMES** holding pattern or as directed by ATC.  
 Speed restriction: 210 KIAS maximum until established on track to **GUAVA**, cross **GUAVA** at 210 KIAS, then maintain 230 KIAS until **LIMES**.  
 Initial missed approach turn must not be made before **PORPA** due to terrain.

<b>DME IZSR</b>	5	4	3	2	1								
<b>DIST THR (NM)</b>	4.8	3.8	2.8	1.8	0.8								
<b>ALTITUDE (FT)</b>	1600	1300	980	660	340								
<b>Missed Approach Climb Gradient</b>		<b>OCA (OCH)</b>				<b>Ground Speed</b>	<b>kt</b>	<b>80</b>	<b>100</b>	<b>120</b>	<b>140</b>	<b>160</b>	<b>180</b>
		<b>A</b>	<b>B</b>	<b>C</b>	<b>D</b>								
<b>ILS CAT I</b>	2.5%	594 (567)	606 (579)	615 (588)	625 (598)	<b>VH721-THR (4.8 NM)</b>	<b>min:s</b>	<b>3:36</b>	<b>2:53</b>	<b>2:24</b>	<b>2:04</b>	<b>1:48</b>	<b>1:36</b>
	3.6% to 1400	227 (200)											
<b>ILS CAT II</b>	3.6% to 1400	127 (100)				<b>ROD (5.2%)</b>	<b>ft / min</b>	<b>420</b>	<b>530</b>	<b>630</b>	<b>740</b>	<b>840</b>	<b>950</b>
<b>VISUAL CIRCLING NOT AVAILABLE</b>		N / A											

CHANGE: Editorial, Note 2, Runway 07C/25C reopened.

**ILS RWY 07R APPROACH****NAVIGATION AIDS**

Navaid/Ident	Frequency	Coordinates		Remarks
Localizer/IZSR	110.9 MHz	22 18 30.05N	113 56 08.39E	Course 074°M
Glide Path	330.8 MHz	22 17 47.78N	113 54 09.48E	3° glide slope Co-located
DME/IZSR	CH 46X			

**TABULAR DESCRIPTION: ILS RWY 07R**

Serial Number	Path Descriptor	Waypoint Identifier	Fly-over	Course °M (°T)	Magnetic Variation	Distance (NM)	Turn Direction	Altitude (ft)	Speed (KIAS)	VPA	Navigation Specification
01	IF	LIMES	-	-	+3.0	-	-	-6000 +3000	-	-	RNP 1
02	TF	STELA	-	338 (335)	+3.0	6.0	-	+2000	@180	-	RNP 1
03	TF	VH720	-	031 (028)	+3.0	3.6	-	+1700	@180	-	RNP 1
04	-	VH721	-	074 (071)	+3.0	3.4	-	-	-	-	Conventional
05	-	RW07R	Y	074 (071)	+3.0	4.8	-	-	-	-	Conventional
06	TF	PORPA	Y	074 (071)	+3.0	7.2	-	-5000	-210	-	RNP 1
07	DF	GUAVA	-	-	+3.0	-	R	-	@210	-	RNP 1
08	TF	SOKOE	-	251 (248)	+3.0	13.0	-	-	@230	-	RNP 1
09	TF	LIMES	-	298 (295)	+3.0	4.2	-	-	@230	-	RNP 1

Note: Coding is not provided for final approach segment. Please refer to the chart for altitude and speed restrictions.

**WAYPOINT LIST**

ILS RWY 07R			
Waypoint Identifier	Coordinates (WGS-84)		Cross Reference from Navaid
LIMES (IAF)	22 06 25.60N	113 46 32.60E	
STELA	22 11 53.29N	113 43 49.11E	
VH720 (IF)	22 15 05.94N	113 45 39.56E	IZSR DME 8.3 NM
VH721 (FAP)	22 16 12.68N	113 49 04.87E	IZSR DME 5.0 NM
RW07R (THR)	22 17 48.03N	113 53 57.99E	IZSR DME 0.2 NM
PORPA	22 20 09.10N	114 01 16.30E	IZSR DME 7.0 NM
GUAVA	22 09 36.10N	114 03 36.30E	
SOKOE	22 04 41.20N	113 50 38.10E	