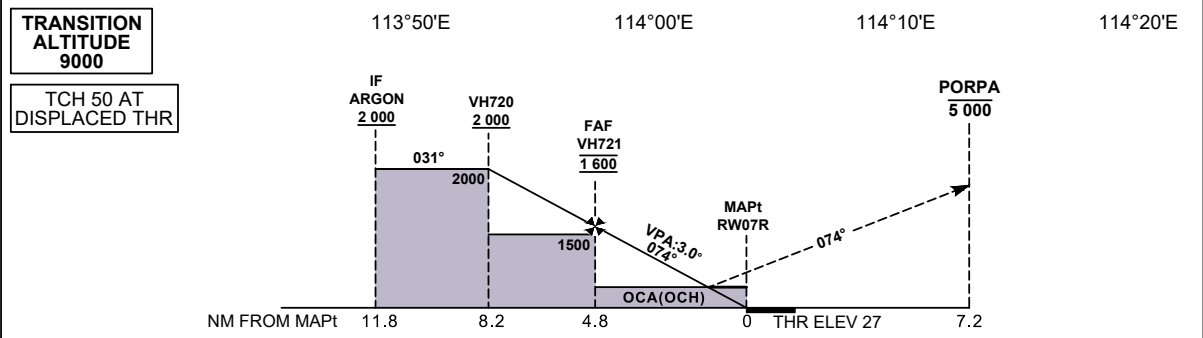
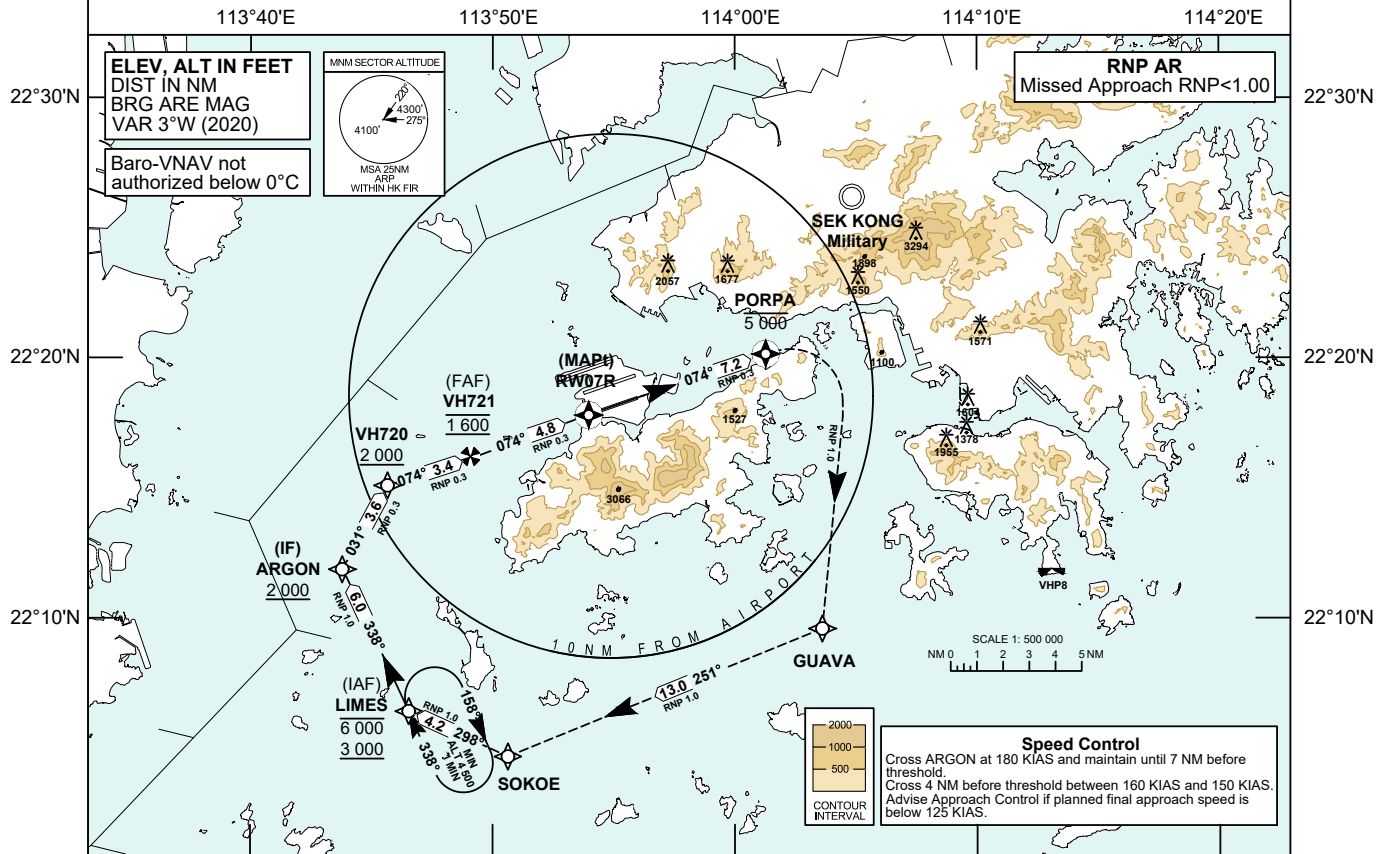


INSTRUMENT APPROACH CHART - ICAO	AERODROME ELEV 28 FT	TOWER	118.4	HONG KONG / INTL (VHHH)
	HEIGHTS RELATED TO THR RWY 07R - ELEV 27 FT	APPROACH DIRECTOR	119.5	

- Notes**
1. RNP AR APCH: RNP 0.3 in Intermediate and Missed Approach segments. RNP values are depicted on Plan View for each applicable leg.
 2. Simultaneous dependent operation is authorized with RWY 07L or RWY 07C.
 3. Do not accept radar vectors inside VH720.



MISSED APPROACH
 Climb to 5 000 ft, track to PORPA, then turn right direct to GUAVA, then SOKOE, then LIMES. Join LIMES holding pattern or as directed by ATC.
 Speed restriction: 210 KIAS maximum until established on track to GUAVA, cross GUAVA at 210 KIAS, then maintain 230 KIAS until LIMES.

DIST THR (NM)	4.8	4	3	2									
ALTITUDE (FT)	1600	1350	1030	710									
Missed Approach Climb Gradient		OCA (OCH)				Ground Speed							
RNP 0.30	2.5%	A	B	C	D	kt	80	100	120	140	160	180	
		430 (410)	430 (410)	430 (410)	430 (410)	430 (410)	VH721-THR (4.8NM)	min:s	3:36	2:53	2:24	2:04	1:48
VISUAL CIRCLING NOT AVAILABLE		N/A				ROD (5.2%)	ft/min	420	530	630	740	840	950

CHANGE: Editorial, notes, speed control, Runway 07C/25C reopened.

RNP Z RWY 07R (AR) APPROACH**TABULAR DESCRIPTION: RNP Z RWY 07R (AR)**

Serial Number	Path Descriptor	Waypoint Identifier	Fly-over	Course °M (°T)	Magnetic Variation	Distance (NM)	Turn Direction	Altitude (ft)	Speed (KIAS)	VPA	Navigation Specification (RNP Value)
01	IF	LIMES	-	-	+3.0	-	-	-6000 +3000	-	-	RNP AR APCH (RNP 1.0)
02	TF	ARGON	-	338 (335)	+3.0	6.0	-	+2000	@180	-	RNP AR APCH (RNP 1.0)
03	TF	VH720	-	031 (028)	+3.0	3.6	-	+2000	@180	-	RNP AR APCH (RNP 0.3)
04	TF	VH721	-	074 (071)	+3.0	3.4	-	@1600	-160 +150	-	RNP AR APCH (RNP 0.3)
05	TF	RW07R	Y	074 (071)	+3.0	4.8	-	@77	-	-3.0	RNP AR APCH (RNP 0.3)
06	TF	PORPA	Y	074 (071)	+3.0	7.2	-	-5000	-210	-	RNP AR APCH (RNP 0.3)
07	DF	GUAVA	-	-	+3.0	-	R	-	@210	-	RNP AR APCH (RNP 1.0)
08	TF	SOKOE	-	251 (248)	+3.0	13.0	-	-	@230	-	RNP AR APCH (RNP 1.0)
09	TF	LIMES	-	298 (295)	+3.0	4.2	-	-	@230	-	RNP AR APCH (RNP 1.0)

WAYPOINT LIST

RNP Z RWY 07R (AR)		
Waypoint Identifier	Coordinates (WGS-84)	
LIMES (IAF)	22 06 25.60N	113 46 32.60E
ARGON (IF)	22 11 52.56N	113 43 47.67E
VH720	22 15 05.94N	113 45 39.56E
VH721 (FAF)	22 16 12.68N	113 49 04.87E
RW07R (MAPT)	22 17 48.03N	113 53 57.99E
PORPA	22 20 09.10N	114 01 16.30E
GUAVA	22 09 36.10N	114 03 36.30E
SOKOE	22 04 41.20N	113 50 38.10E