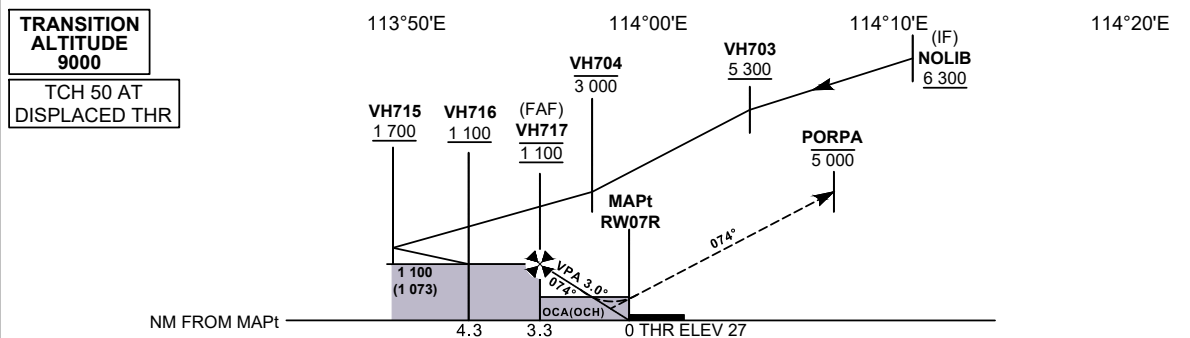
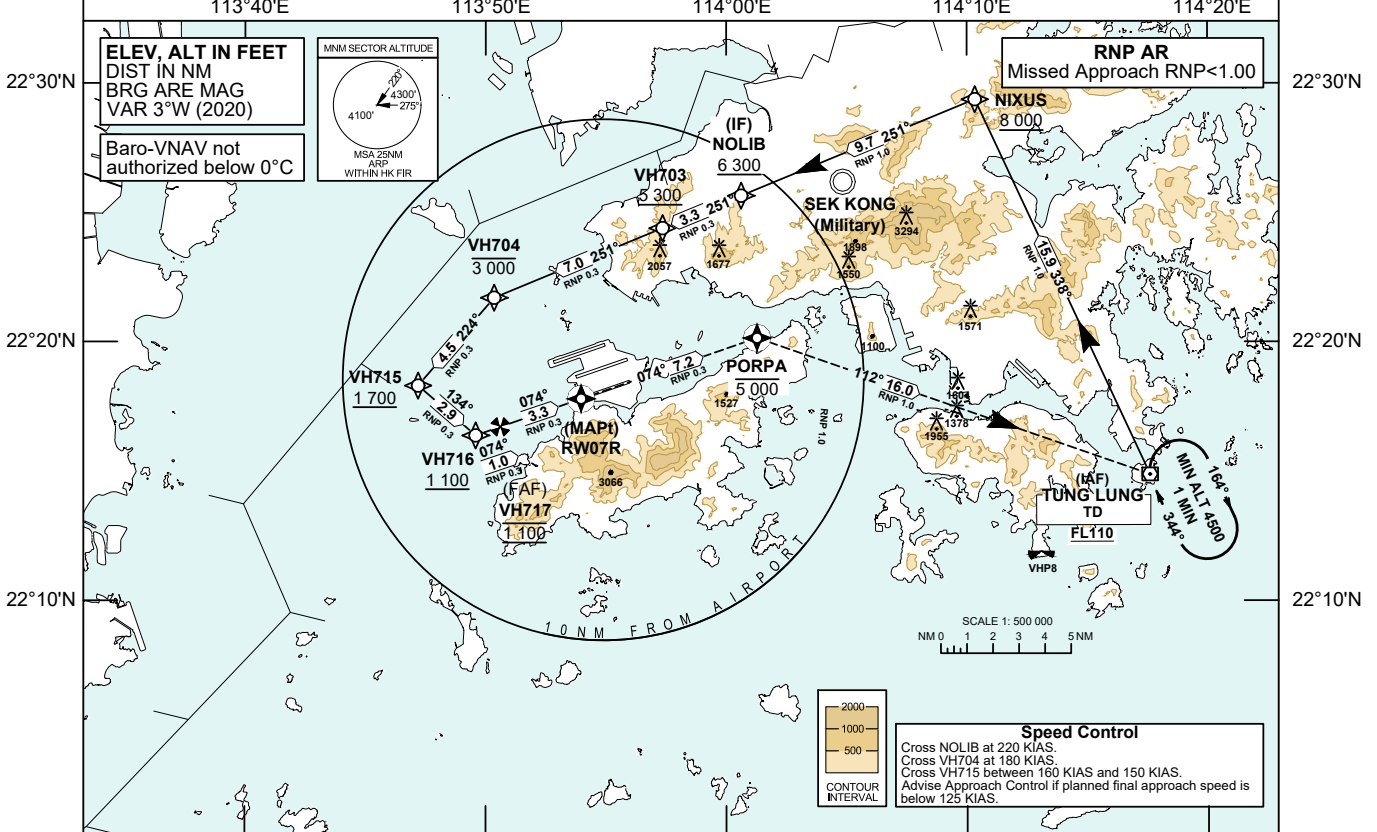


<b>INSTRUMENT APPROACH CHART - ICAO</b>	<b>AERODROME ELEV 28 FT</b>	<b>TOWER</b>	118.4	<b>HONG KONG / INTL (VHHH)</b>
	<b>HEIGHTS RELATED TO THR RWY 07R - ELEV 27 FT</b>	<b>APPROACH DIRECTOR</b>	119.5	

- Notes**
1. RNP AR APCH: RNP 0.3 in Intermediate and Missed Approach segments. RNP values are depicted on Plan View for each applicable leg.
  2. The close proximity of the northern FIR boundary requires strict adherence to the procedure track. Execute a missed approach if unable to comply and expect radar vectors within Hong Kong FIR when above the minimum vector altitude.
  3. This is the contingency procedure for RWY 07R when bad weather or other unforeseen circumstances block the flight path to the southwest of the airport.
  4. Simultaneous dependent operation is authorized with RWY 07L or RWY 07C.
  5. Do not accept radar vectors inside NOLIB.



**MISSED APPROACH**  
 Climb to 5 000 ft, track to PORPA, then to TD. Join TD holding pattern or as directed by ATC.  
 Speed restriction: 220 KIAS maximum until TD, cross TD at 220 KIAS.

DIST THR (NM)	3.3	3	2										
ALTITUDE (FT)	1100	1010	700										
<b>Missed Approach Climb Gradient</b>	<b>OCA (OCH)</b>				<b>Ground Speed</b>	<b>kt</b>	<b>80</b>	<b>100</b>	<b>120</b>	<b>140</b>	<b>160</b>	<b>180</b>	
	A	B	C	D									
RNP 0.30	2.5%	430 (410)				VH717-THR (3.3NM)	min:s	2:28	1:59	1:39	1:25	1:14	1:06
VISUAL CIRCLING NOT AVAILABLE	N / A				ROD (5.1%)	ft / min	410	520	620	720	830	930	

CHANGE: VPA

**RNP Y RWY 07R (AR) APPROACH****TABULAR DESCRIPTION: RNP Y RWY 07R (AR)**

Serial Number	Path Descriptor	Waypoint Identifier	Fly-over	Course °M (°T)	Magnetic Variation	Distance (NM)	Turn Direction	Altitude (ft)	Speed (KIAS)	VPA	Navigation Specification (RNP Value)
01	IF	TD	-	-	+3.0	-	-	+FL110	-	-	RNP AR APCH (RNP 1.0)
02	TF	NIXUS	-	338 (335)	+3.0	15.9	-	+8000	-	-	RNP AR APCH (RNP 1.0)
03	TF	NOLIB	-	251 (248)	+3.0	9.7	-	+6300	@220	-	RNP AR APCH (RNP 1.0)
04	TF	VH703	-	251 (248)	+3.0	3.3	-	+5300	-	-	RNP AR APCH (RNP 0.3)
05	TF	VH704	-	251 (248)	+3.0	7.0	-	-3000	@180	-	RNP AR APCH (RNP 0.3)
06	TF	VH715	-	224 (221)	+3.0	4.5	-	+1700	-160 +150	-	RNP AR APCH (RNP 0.3)
07	TF	VH716	-	134 (131)	+3.0	2.9	-	+1100	-	-	RNP AR APCH (RNP 0.3)
08	TF	VH717	-	074 (071)	+3.0	1.0	-	@1100	-	-	RNP AR APCH (RNP 0.3)
09	TF	RW07R	Y	074 (071)	+3.0	3.3	-	@77	-	-3.0	RNP AR APCH (RNP 0.3)
10	TF	PORPA	Y	074 (071)	+3.0	7.2	-	-5000	-220	-	RNP AR APCH (RNP 0.3)
11	TF	TD	-	112 (109)	+3.0	16.0	-	-	@220	-	RNP AR APCH (RNP 1.0)

**WAYPOINT LIST**

RNP Y RWY 07R (AR)		
Waypoint Identifier	Coordinates (WGS-84)	
TD (IAF)	22 14 52.42N	114 17 35.30E
NIXUS	22 29 22.05N	114 10 19.70E
NOLIB (IF)	22 25 38.95N	114 00 36.84E
VH703	22 24 23.82N	113 57 20.92E
VH704	22 21 42.46N	113 50 21.18E
VH715	22 18 18.69N	113 47 11.73E
VH716	22 16 23.23N	113 49 35.17E
VH717 (FAF)	22 16 42.96N	113 50 36.28E
RW07R (MAPT)	22 17 48.03N	113 53 57.99E
PORPA	22 20 09.10N	114 01 16.30E