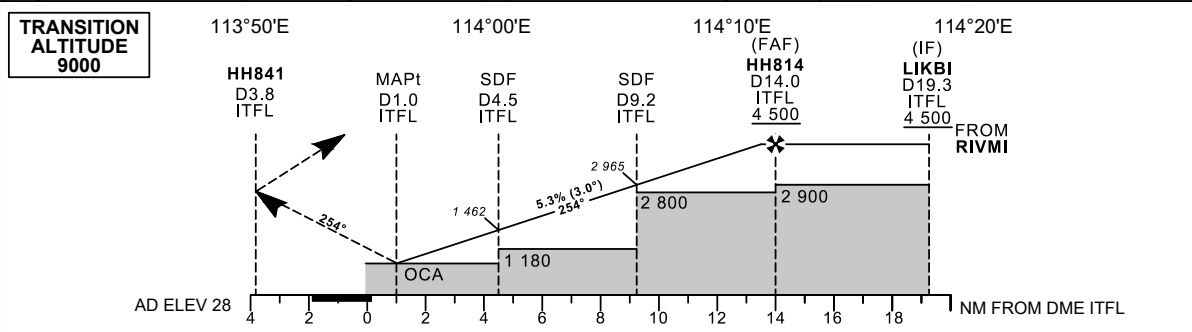
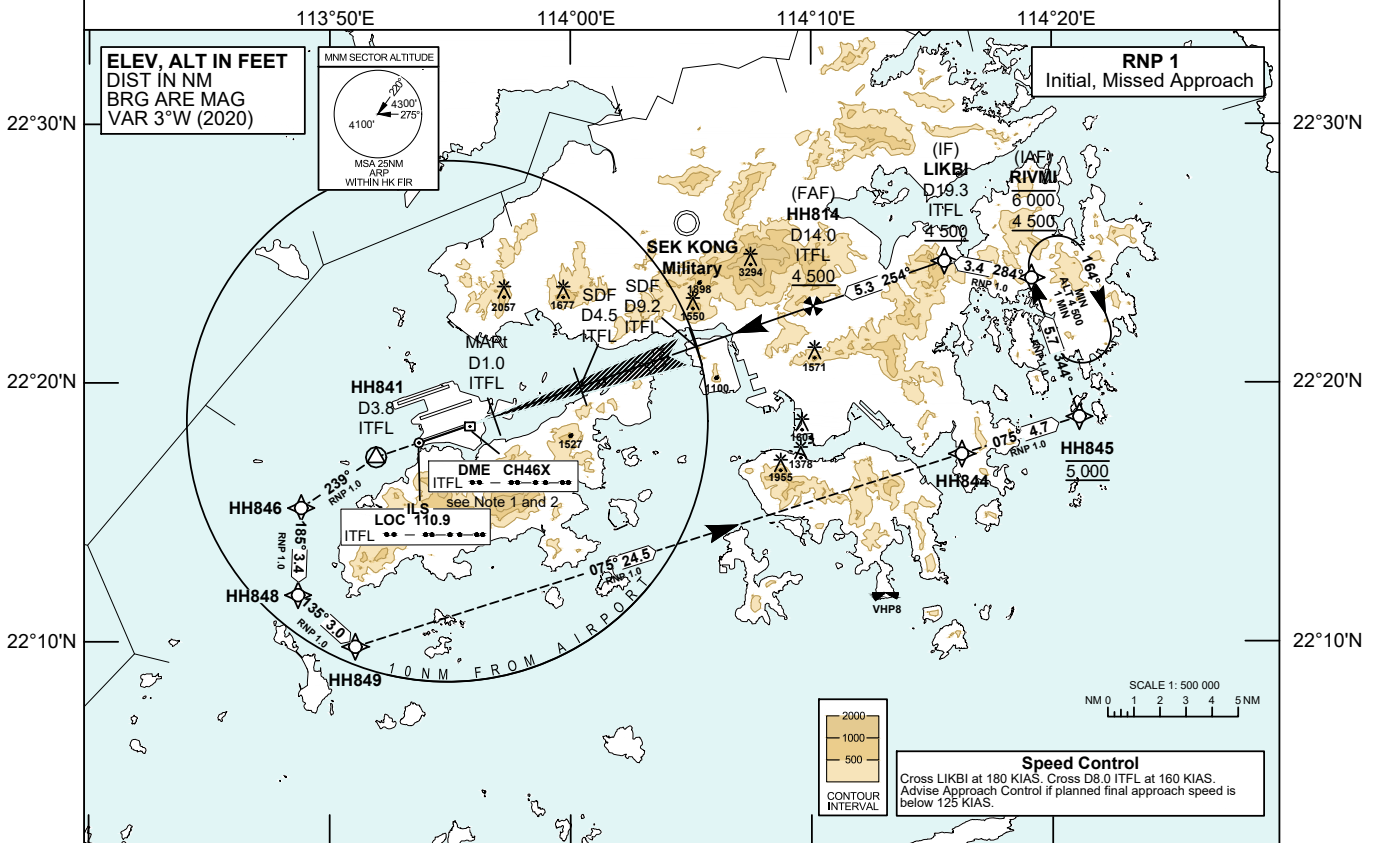


INSTRUMENT APPROACH CHART - ICAO	AERODROME ELEV 28 FT	TOWER 118.4	HONG KONG / INTL (VHHH) LOC RWY 25L
	THR ELEV 27 FT	APPROACH 119.1	
	HEIGHTS RELATED TO AD ELEV	DIRECTOR 119.5	

- Warnings** 1. LOC ITFL UNUSABLE BEYOND 28° LEFT OF COURSE AND BEYOND 22° RIGHT OF COURSE
- Notes**
- DME is required.
 - If unable RNP 1, inform ATC accordingly. If unable RNP 1 during missed approach, continue on the published missed approach track, climb and pass Minimum Sector Altitude (MSA) 4 300 ft as soon as practicable, and continue to 5 000 ft.



MISSED APPROACH
Climb to 5 000 ft. Track 254°M to HH841 (ITFL D3.8). Turn left track 239°M to HH846, then proceed to HH848, HH849, HH844, HH845 and RIVMI.
Speed restriction: 185 KIAS maximum until HH849, then maintain 230 KIAS until HH844, then maintain 210 KIAS until RIVMI.
Initial missed approach turn must not be made before HH841 due to terrain.

DME ITFL	14	13	12	11	10	9	8	7	6	5	4	3	2
DIST THR (NM)	13.8	12.8	11.8	10.8	9.8	8.8	7.8	6.8	5.8	4.8	3.8	2.8	1.8
ALTITUDE (FT)	4500	4170	3850	3530	3210	2890	2570	2250	1930	1610	1290	970	650

Missed Approach Climb Gradient	OCA (OCH)				Ground Speed	kt	80	100	120	140	160	180	
	A	B	C	D									
LOC	2.5%	690 (662)				HH814-THR (13.8 NM)	min:s	10:22	8:18	6:55	5:55	5:11	4:36
	4.0%	420 (392)					ft / min	430	530	640	750	850	960
VISUAL CIRCLING NOT AVAILABLE		N / A				ROD (5.3%)	ft / min	430	530	640	750	850	960

CHANGE: New Procedure. Runway 07C/25C reopened.

LOC RWY 25L APPROACH**NAVIGATION AIDS**

Navaid/Ident	Frequency	Coordinates		Remarks
Localizer/ITFL	110.9 MHz	22 17 42.98N	113 53 42.30E	Course 254°M
DME/ITFL	CH 46X	22 18 19.93N	113 55 49.28E	

TABULAR DESCRIPTION: LOC RWY 25L

Serial Number	Path Descriptor	Waypoint Identifier	Fly-over	Course °M (°T)	Magnetic Variation	Distance (NM)	Turn Direction	Altitude (ft)	Speed (KIAS)	VPA	Navigation Specification
01	TF	RIVMI	-	-	+3.0	-	-	-6000 +4500	-	-	RNP 1
02	TF	LIKBI	-	284 (281)	+3.0	3.4	-	+4500	@180	-	RNP 1
03	-	HH814	-	254 (251)	+3.0	5.3	-	+4500	@180	-	Conventional
04	-	RW25L	Y	254 (251)	+3.0	13.8	-	-	-	-	Conventional
05	-	HH841	Y	254 (251)	+3.0	4.0	-	-	-185	-	Conventional
06	CF	HH846	-	239 (236)	+3.0	-	-	-	@185	-	RNP 1
07	TF	HH848	-	185 (182)	+3.0	3.4	-	-	@185	-	RNP 1
08	TF	HH849	-	135 (132)	+3.0	3.0	-	-	@185	-	RNP 1
09	TF	HH844	-	075 (072)	+3.0	24.5	-	-	@230	-	RNP 1
10	TF	HH845	-	075 (072)	+3.0	4.7	-	@5000	@210	-	RNP 1
11	TF	RIVMI	-	344 (341)	+3.0	5.7	-	-	@210	-	RNP 1

Note: Coding is not provided for final approach segment. Please refer to the chart for altitude and speed restrictions.

WAYPOINT LIST

LOC RWY 25L			
Waypoint Identifier	Coordinates (WGS-84)		Cross Reference from Navaid
RIVMI (IAF)	22 24 03.96N	114 19 09.28E	
LIKBI (IF)	22 24 43.38N	114 15 32.10E	ITFL DME 19.3 NM
HH814 (FAF)	22 22 58.61N	114 10 04.78E	ITFL DME 14.0 NM
SDF9.2	22 21 24.41N	114 05 10.89E	ITFL DME 9.2 NM
SDF4.5	22 19 52.02N	114 00 23.21E	ITFL DME 4.5 NM
MAPt	22 18 43.11N	113 56 48.97E	ITFL DME 1.0 NM
RW25L (THR)	22 18 26.75N	113 55 58.15E	ITFL DME 0.2 NM
HH841	22 17 08.54N	113 51 55.54E	ITFL DME 3.8 NM
HH846	22 15 10.93N	113 48 48.94E	
HH848	22 11 48.89N	113 48 41.36E	
HH849	22 09 49.33N	113 51 03.91E	
HH844	22 17 16.04N	114 16 15.09E	
HH845	22 18 42.08N	114 21 08.00E	