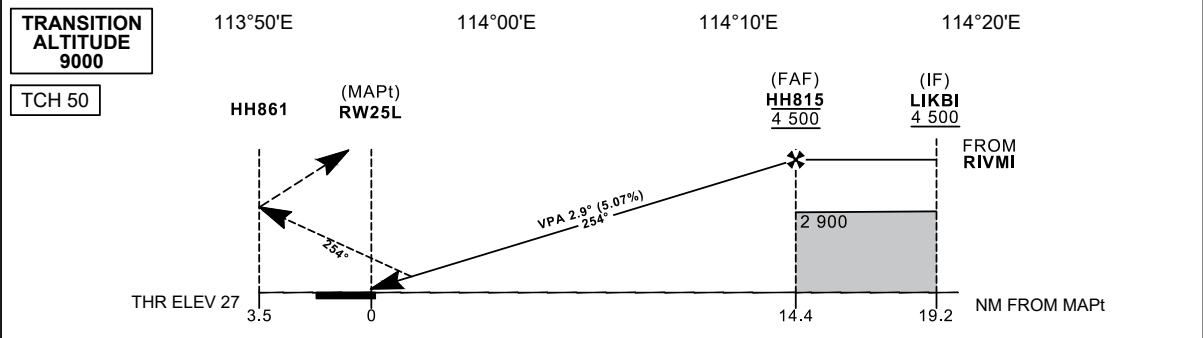
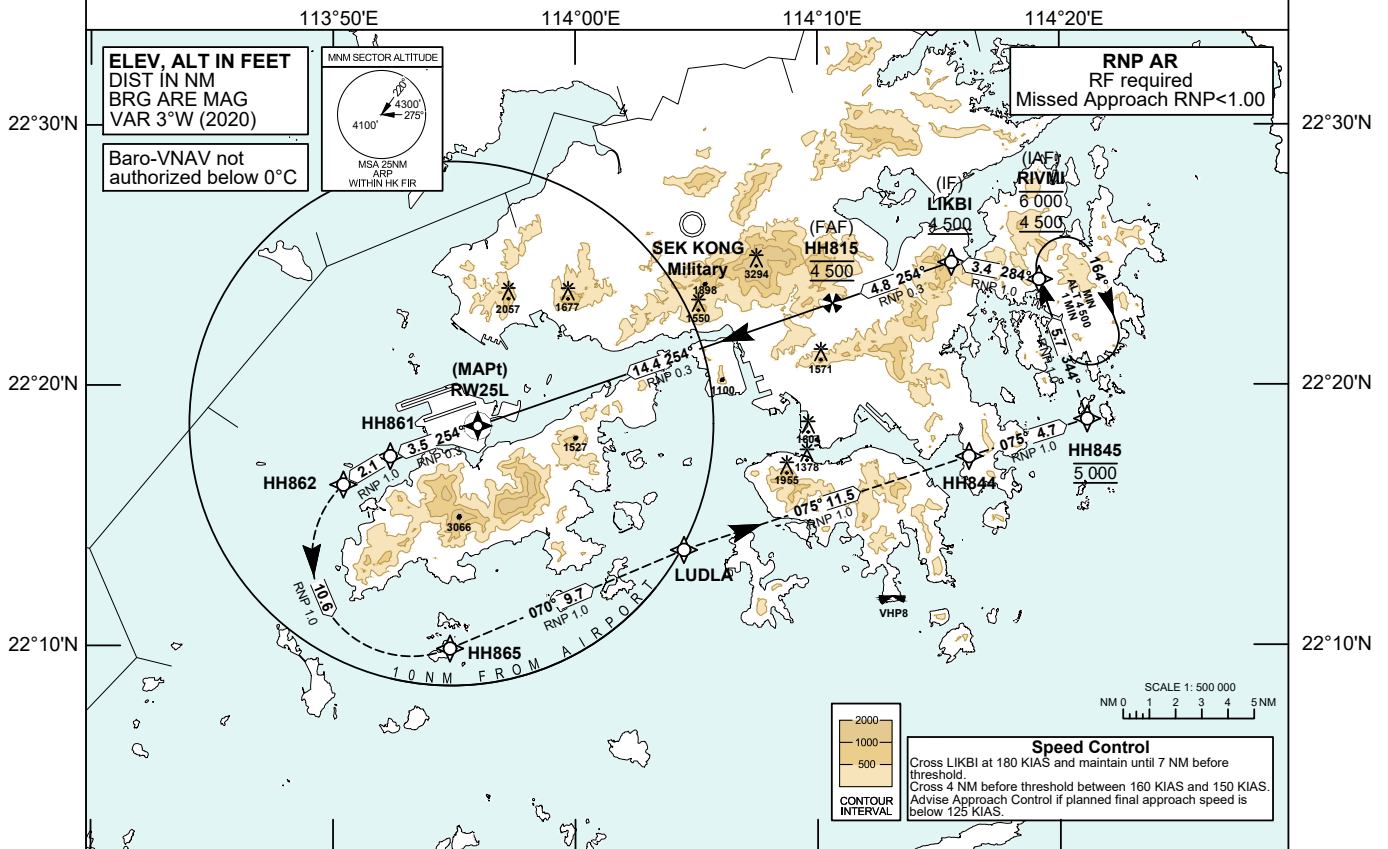


<b>INSTRUMENT APPROACH CHART - ICAO</b>	<b>AERODROME ELEV 28 FT</b>	<b>TOWER</b>	118.4	<b>HONG KONG / INTL (VHHH)</b>
	<b>HEIGHTS RELATED TO THR RWY 25L - ELEV 27 FT</b>	<b>APPROACH DIRECTOR</b>	119.5	

- Notes**
1. RNP AR APCH: RNP 0.3 in Intermediate and Missed Approach segments. RNP values are depicted on Plan View for each applicable leg.
  2. Simultaneous dependent operation is authorized with RWY 25R or RWY 25C.
  3. Do not accept radar vectors inside LIKBI.



**MISSED APPROACH**  
 Climb to 5 000 ft. From RWY25L track 254°M to HH861. Proceed to HH862, then to HH865, LUDLA, HH844, HH845 and RIVMI.  
 Speed restriction: 185 KIAS maximum until HH865, then maintain 230 KIAS until HH844, then maintain 210 KIAS until RIVMI.

DIST THR (NM)	14.4	14	13	12	11	10	9	8	7	6	5	4	3	2
ALTITUDE (FT)	4500	4390	4080	3770	3460	3160	2850	2540	2230	1920	1620	1310	1000	690
<b>Missed Approach Climb Gradient</b>	<b>OCA (OCH)</b>				<b>Ground Speed</b>	<b>kt</b>	<b>80</b>	<b>100</b>	<b>120</b>	<b>140</b>	<b>160</b>	<b>180</b>		
	<b>A</b>	<b>B</b>	<b>C</b>	<b>D</b>									<b>min:s</b>	<b>ft / min</b>
RNP 0.30	2.5%	467 (440)	486 (459)	506 (479)	518 (491)	HH815-THR (14.4 NM)	10:46	8:37	7:11	6:09	5:23	4:47		
VISUAL CIRCLING NOT AVAILABLE	N / A				ROD (5.1%)	410	510	620	720	820	920			

CHANGE: New Procedure. Runway 07C/25C reopened.

**RNP Z RWY 25L (AR) APPROACH****TABULAR DESCRIPTION: RNP Z RWY 25L (AR)**

Serial Number	Path Descriptor	Waypoint Identifier	Fly-over	Course °M (°T)	Magnetic Variation	Distance (NM)	Turn Direction	Altitude (ft)	Speed (KIAS)	VPA	Navigation Specification (RNP Value)
01	IF	RIVMI	-	-	+3.0	-	-	-6000 +4500	-	-	RNP AR APCH (RNP 1.0)
02	TF	LIKBI	-	284 (281)	+3.0	3.4	-	+4500	@180	-	RNP AR APCH (RNP 1.0)
03	TF	HH815	-	254 (251)	+3.0	4.8	-	@4500	@180	-	RNP AR APCH (RNP 0.3)
04	TF	RW25L	Y	254 (251)	+3.0	14.4	-	@77	-	-2.9	RNP AR APCH (RNP 0.3)
05	TF	HH861	-	254 (251)	+3.0	3.5	-	-	-185	-	RNP AR APCH (RNP 0.3)
06	RF Centre: HH982 r=5.026 NM	HH862	-	-	+3.0	2.1	L	-	-185	-	RNP AR APCH (RNP 1.0)
07	RF Centre: HH985 r=3.802 NM	HH865	-	-	+3.0	10.6	L	-	-185	-	RNP AR APCH (RNP 1.0)
08	TF	LUDLA	-	070 (067)	+3.0	9.7	-	-	@230	-	RNP AR APCH (RNP 1.0)
09	TF	HH844	-	075 (072)	+3.0	11.5	-	-	@230	-	RNP AR APCH (RNP 1.0)
10	TF	HH845	-	075 (072)	+3.0	4.7	-	@5000	@210	-	RNP AR APCH (RNP 1.0)
11	TF	RIVMI	-	344 (341)	+3.0	5.7	L	-	@210	-	RNP AR APCH (RNP 1.0)

**WAYPOINT LIST**

RNP Z RWY 25L (AR)		
Waypoint Identifier	Coordinates (WGS-84)	
RIVMI	22 24 03.96N	114 19 09.28E
LIKBI (IF)	22 24 43.38N	114 15 32.10E
HH815 (FAF)	22 23 09.08N	114 10 37.30E
RW25L (MAPT)	22 18 26.75N	113 55 58.15E
HH861	22 17 16.92N	113 52 21.60E
HH862	22 16 11.53N	113 50 25.47E
HH865	22 09 53.61N	113 54 49.53E
LUDLA	22 13 40.79N	114 04 28.75E
HH844	22 17 16.04N	114 16 15.09E
HH845	22 18 42.08N	114 21 08.00E
RF Arc Centre Identifier	Coordinates (WGS-84)	
HH982	22 12 30.91N	113 54 08.12E
HH985	22 13 24.62N	113 53 13.94E