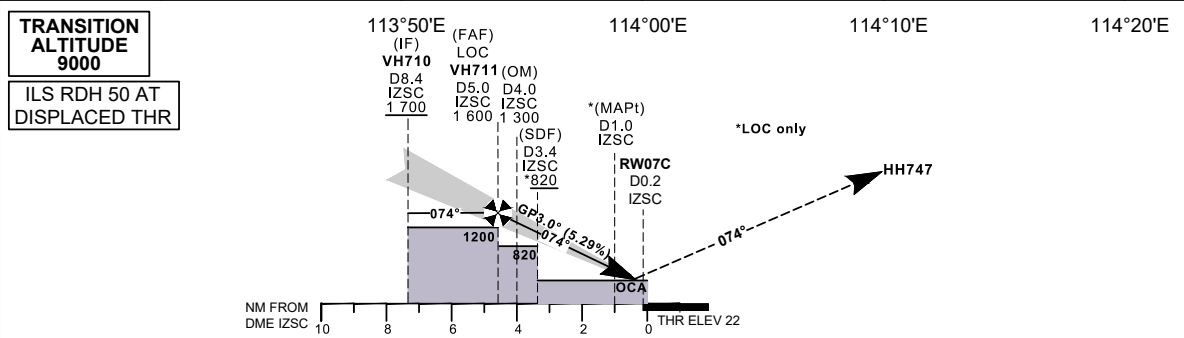
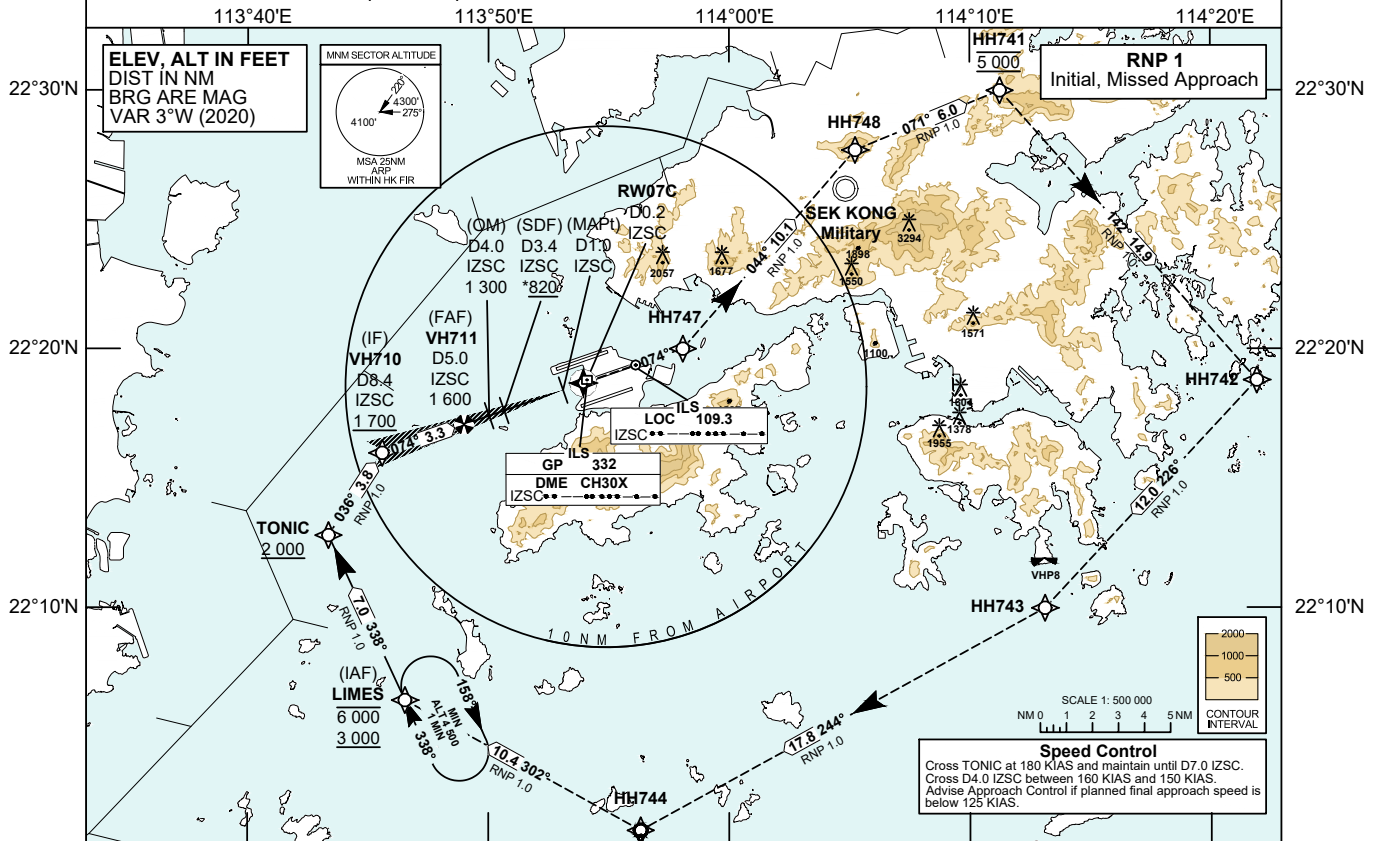


<b>INSTRUMENT APPROACH CHART - ICAO</b>	<b>AERODROME ELEV 28 FT</b>	<b>TOWER</b> 118.2	<b>HONG KONG / INTL (VHHH)</b> <b>ILS CAT II or LOC</b> <b>RWY 07C</b>
	HEIGHTS RELATED TO	<b>APPROACH</b> 119.1	
	THR RWY 07C - ELEV 22 FT	<b>DIRECTOR</b> 119.5	

- Warnings**
- LOC IZSC UNUSABLE BEYOND 22° LEFT OF COURSE AND BEYOND 26° RIGHT OF COURSE
  - PILOTS SHOULD MONITOR FOR FALSE CAPTURE OF LOC AND GP BY COMPARING INDICATIONS WITH AIRCRAFT POSITION AND ALTITUDE
- Notes**
- DME is required.
  - If unable RNP 1, inform ATC accordingly. If unable RNP 1 during missed approach, continue on the published missed approach track, climb and pass Minimum Sector Altitude (MSA) 4 300 ft as soon as practicable, and continue to 5 000 ft.
  - Simultaneous dependent operation is authorized with RWY 07R.



**MISSED APPROACH**  
Climb to 5 000 ft. Track 074°M to HH747, then turn left to HH748. Track to HH741, then proceed to HH742, HH743, HH744 and LIMES.  
Speed restriction: Maximum 200 KIAS until HH748, then maintain 230 KIAS until LIMES.

<b>DME IZSC</b>	5	4	3	2
<b>DIST THR (NM)</b>	4.8	3.8	2.8	1.8
<b>ALTITUDE (FT)</b>	1600	1280	960	640

<b>CHANGE: New Procedure.</b>	<b>MISSED APPROACH</b>		<b>OCA (OCH)</b>													
	<b>CLIMB GRADIENT</b>		<b>A</b>	<b>B</b>	<b>C</b>	<b>D</b>	<b>Ground Speed</b>		<b>kt</b>	<b>80</b>	<b>100</b>	<b>120</b>	<b>140</b>	<b>160</b>	<b>180</b>	
	ILS CAT I	2.5%	781 (759)				HH711-THR (4.9 NM)	min:s	3:39	2:55	2:26	2:05	1:49	1:37		
		4.6%	222 (200)					ft / min	420	520	630	730	840	940		
	ILS CAT II	4.9%	122 (100)				LOC (GP INOP)									
		2.5%	930 (902)													
VISUAL CIRCLING NOT AVAILABLE		N / A														

**ILS or LOC RWY 07C APPROACH****NAVIGATION AIDS**

Navaid/Ident	Frequency	Coordinates		Remarks
Localizer/IZSC	109.3 MHz	22 19 22.54N	113 56 06.89E	Course 074°M
Glide Path	332.0 MHz	22 18 47.96N	113 54 05.67E	3° glide slope Co-located
DME/IZSC	CH 30X			

**TABULAR DESCRIPTION: ILS or LOC RWY 07C**

Serial Number	Path Descriptor	Waypoint Identifier	Fly-over	Course °M (°T)	Magnetic Variation	Distance (NM)	Turn Direction	Altitude (ft)	Speed (KIAS)	VPA	Navigation Specification
01	IF	LIMES	-	-	+3.0	-	-	-6000 +3000	-	-	RNP 1
02	TF	TONIC	-	338 (335)	+3.0	7.0	-	+2000	@180	-	RNP 1
03	TF	VH710	-	036 (033)	+3.0	3.8	-	+1700	@180	-	RNP 1
04	-	VH711	-	074 (071)	+3.0	3.3	-	-	-	-	Conventional
05	-	RW07C	Y	074 (071)	+3.0	4.9	-	-	-	-	Conventional
06	CF	HH747	-	074 (071)	+3.0	-	-	-	-200	-	RNP 1
07	TF	HH748	-	044 (041)	+3.0	10.1	-	-	@200	-	RNP 1
08	TF	HH741	-	071 (068)	+3.0	6.0	-	@5000	@230	-	RNP 1
09	TF	HH742	-	142 (139)	+3.0	14.9	-	-	@230	-	RNP 1
10	TF	HH743	-	226 (223)	+3.0	12.0	-	-	@230	-	RNP 1
11	TF	HH744	-	244 (241)	+3.0	17.8	-	-	@230	-	RNP 1
12	TF	LIMES	-	302 (299)	+3.0	10.4	-	-	@230	-	RNP 1

Note: Coding is not provided for final approach segment. Please refer to the chart for altitude and speed restrictions.

**WAYPOINT LIST**

ILS or LOC RWY 07C			
Waypoint Identifier	Coordinates (WGS-84)		Cross Reference from Navaid
LIMES (IAF)	22 06 25.60N	113 46 32.60E	
TONIC	22 12 47.88N	113 43 21.85E	
VH710 (IF)	22 15 58.80N	113 45 35.61E	IZSC DME 8.4 NM
VH711 (FAF)	22 17 04.63N	113 48 59.26E	IZSC DME 5.0 NM
SDF, LOC only	22 17 36.93N	113 50 39.30E	IZSC DME 3.4 NM
MAPt, LOC only	22 18 24.32N	113 53 06.18E	IZSC DME 1.0 NM
RW07C (THR)	22 18 40.58N	113 53 56.64E	IZSC DME 0.2 NM
HH747	22 20 00.42N	113 58 04.56E	
HH748	22 27 40.86N	114 05 14.12E	
HH741	22 29 58.66N	114 11 14.89E	
HH742	22 18 46.90N	114 21 54.81E	
HH743	22 09 58.85N	114 13 06.23E	
HH744	22 01 23.71N	113 56 19.34E	