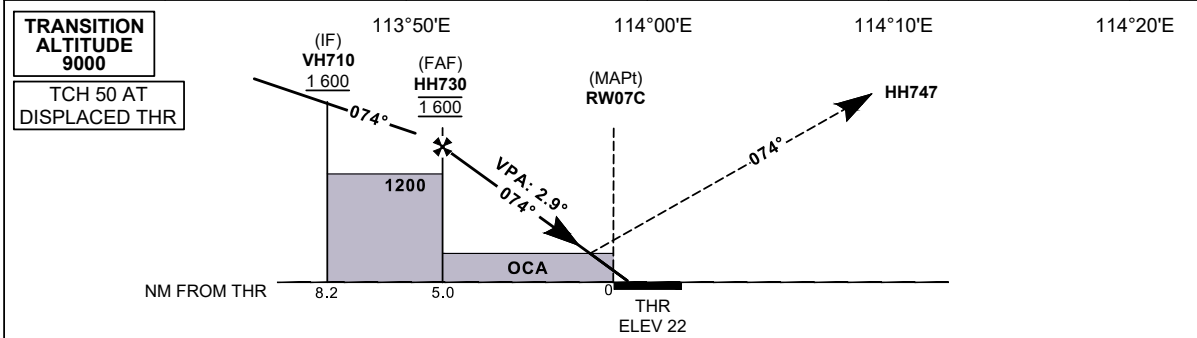
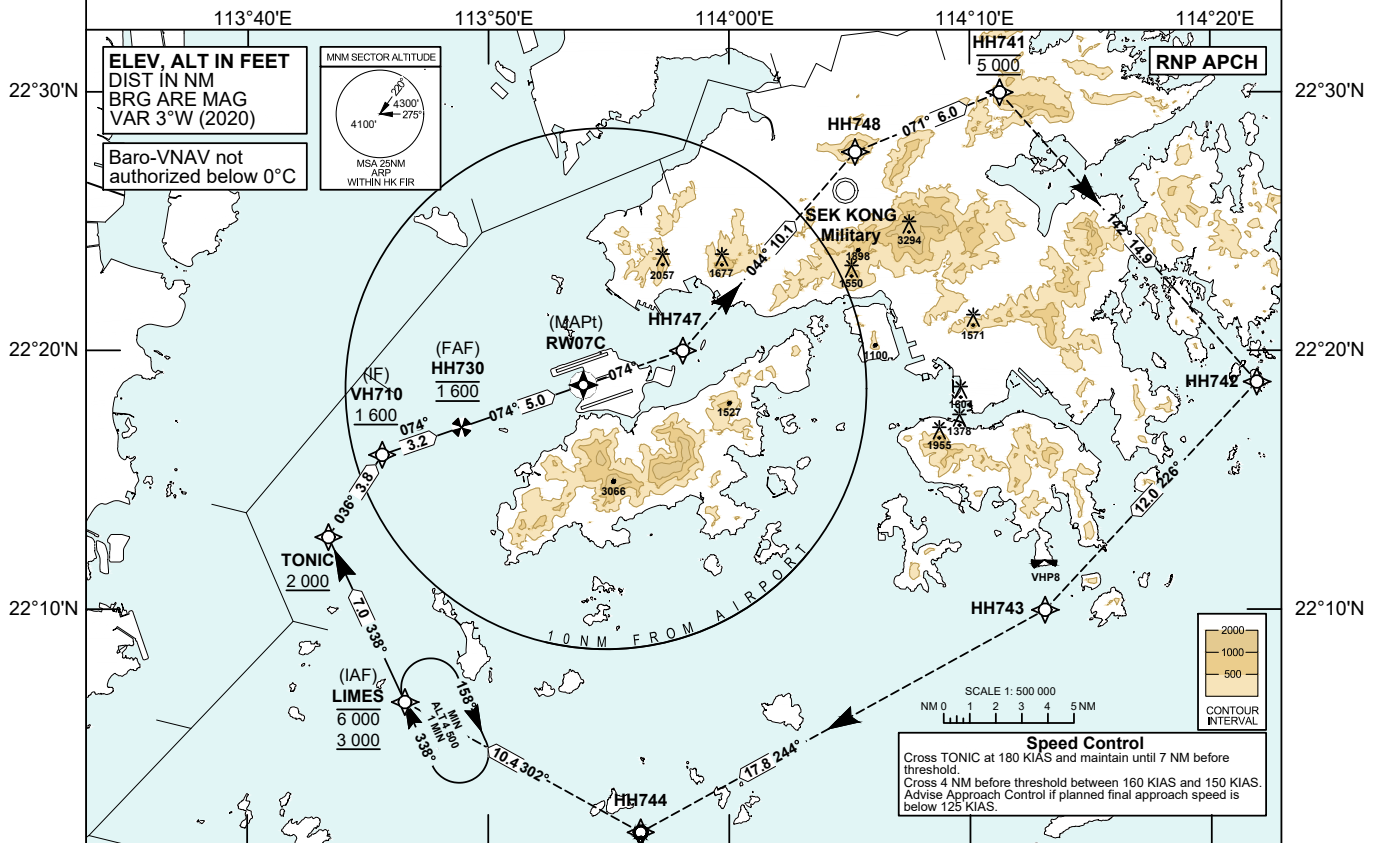


INSTRUMENT APPROACH CHART - ICAO	AERODROME ELEV 28 FT	TOWER	118.2	HONG KONG / INTL (VHHH) RNP RWY 07C (LNAV/VNAV only)
	HEIGHTS RELATED TO THR RWY 07C - ELEV 22 FT	APPROACH DIRECTOR	119.1	
			119.5	

Notes 1. Simultaneous dependent operation is authorized with RWY 07R.



MISSED APPROACH
Climb to 5 000 ft. From RWY07C, track 074°M to HH747, then turn left to HH748. Track to HH741, then proceed to HH742, HH743, HH744 and LIMES.
Speed restriction: Maximum 200 KIAS until HH748, then maintain 230 KIAS until LIMES.

DIST THR (NM)	5	4	3	2
ALTITUDE (FT)	1600	1300	1000	690

CHANGE: New Procedure.

Missed Approach Climb Gradient	OCA (OCH)				Ground Speed	kt	80	100	120	140	160	180
	A	B	C	D								
LNAV/VNAV 2.5%	808 (786)				HH730-THR (5.0 NM)	min:s	3:43	2:59	2:29	2:08	1:52	1:39
LNAV/VNAV 4.4%	302 (280)	312 (290)	322 (300)	331 (309)		ft/min	410	510	620	720	820	920
VISUAL CIRCLING NOT AVAILABLE	N / A				ROD (5.1%)	ft/min	410	510	620	720	820	920

RNP RWY 07C APPROACH**TABULAR DESCRIPTION: RNP RWY 07C**

Serial Number	Path Descriptor	Waypoint Identifier	Fly-over	Course °M (°T)	Magnetic Variation	Distance (NM)	Turn Direction	Altitude (ft)	Speed (KIAS)	VPA	Navigation Specification
01	IF	LIMES	-	-	+3.0	-	-	-6000 +3000	-	-	RNP APCH
02	TF	TONIC	-	338 (335)	+3.0	7.0	-	+2000	@180	-	RNP APCH
03	TF	VH710	-	036 (033)	+3.0	3.8	-	+1600	@180	-	RNP APCH
04	TF	HH730	-	074 (071)	+3.0	3.2	-	@1600	-160 +150	-	RNP APCH
05	TF	RW07C	Y	074 (071)	+3.0	5.0	-	@72	-	-2.9	RNP APCH
06	CF	HH747	-	074 (071)	+3.0	-	-	-	-200	-	RNP APCH
07	TF	HH748	-	044 (041)	+3.0	10.1	-	-	@200	-	RNP APCH
08	TF	HH741	-	071 (068)	+3.0	6.0	-	@5000	@230	-	RNP APCH
09	TF	HH742	-	142 (139)	+3.0	14.9	-	-	@230	-	RNP APCH
10	TF	HH743	-	226 (223)	+3.0	12.0	-	-	@230	-	RNP APCH
11	TF	HH744	-	244 (241)	+3.0	17.8	-	-	@230	-	RNP APCH
12	TF	LIMES	-	302 (299)	+3.0	10.4	-	-	@230	-	RNP APCH

WAYPOINT LIST

RNP RWY 07C		
Waypoint Identifier	Coordinates (WGS-84)	
LIMES (IAF)	22 06 25.60N	113 46 32.60E
TONIC	22 12 47.88N	113 43 21.85E
VH710 (IF)	22 15 58.80N	113 45 35.61E
HH730 (FAF)	22 17 02.67N	113 48 53.16E
RW07C (THR)	22 18 40.58N	113 53 56.64E
HH747	22 20 00.42N	113 58 04.56E
HH748	22 27 40.86N	114 05 14.12E
HH741	22 29 58.66N	114 11 14.89E
HH742	22 18 46.90N	114 21 54.81E
HH743	22 09 58.85N	114 13 06.23E
HH744	22 01 23.71N	113 56 19.34E