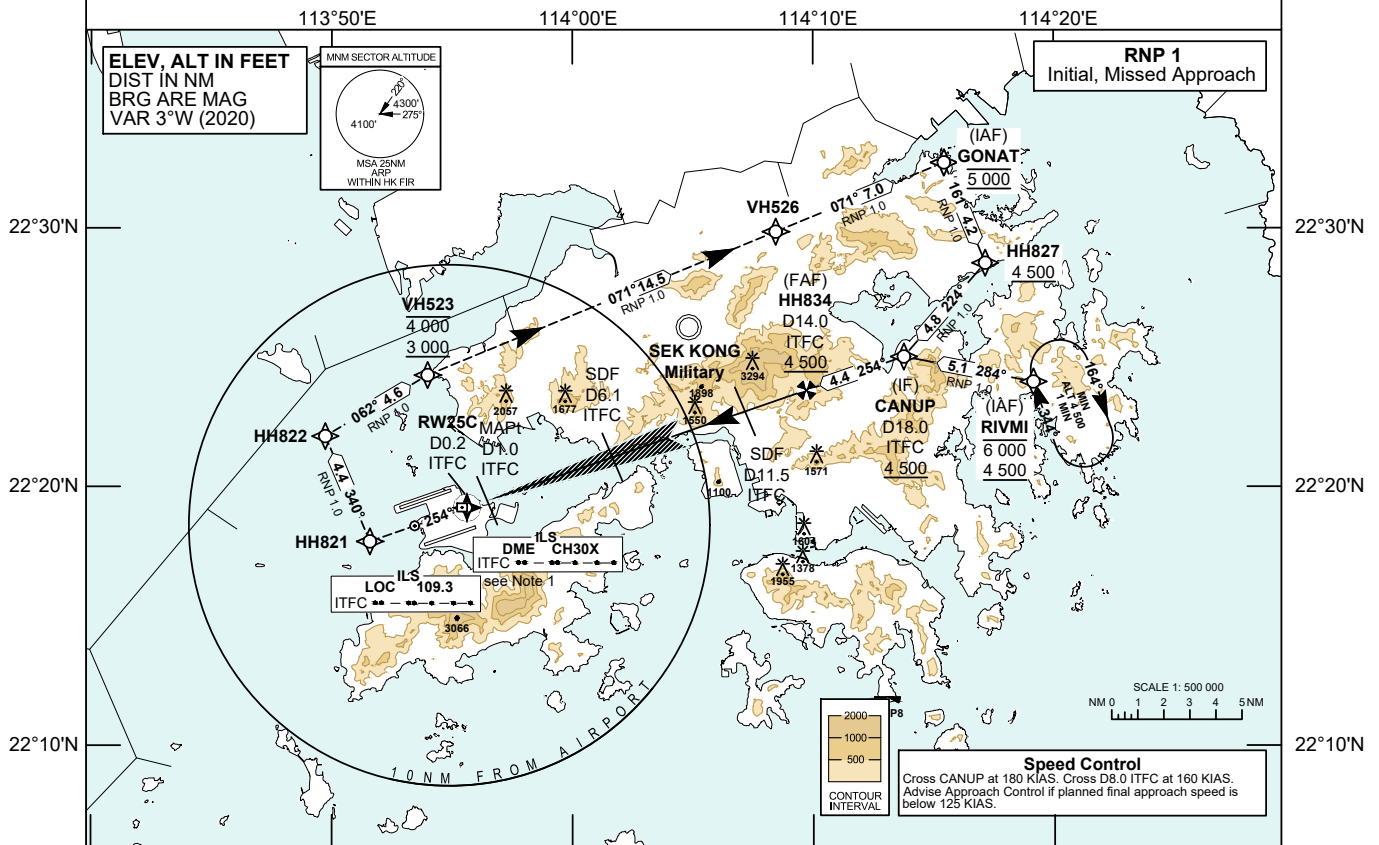


INSTRUMENT APPROACH CHART - ICAO	AERODROME ELEV 28 FT	TOWER 118.2	HONG KONG / INTL (VHHH) LOC RWY 25C
	THR ELEV 22 FT	APPROACH 119.1	
	HEIGHTS RELATED TO AD ELEV	DIRECTOR 119.5	

- Warnings** 1. LOC ITFC UNUSABLE BEYOND 19° RIGHT OF COURSE
- Notes**
- DME is required.
 - If unable RNP 1, inform ATC accordingly. If unable RNP 1 during missed approach, continue on the published missed approach track, climb and pass Minimum Sector Altitude (MSA) 4 300 ft as soon as practicable, and continue to 5 000 ft.



MISSED APPROACH
 Climb initially to 4 000 ft and track 254°M to HH821, then turn right to HH822. Proceed to VH523 and cross VH523 between 3 000 ft and 4 000 ft. From VH523, climb to 5 000 ft and track to VH526 and GONAT.
 Speed restriction: 185 KIAS maximum until VH523, then maintain 230 KIAS until VH526, then maintain 210 KIAS until GONAT.

DME ITFC	14	13	12	11	10	9	8	7	6	5	4	3	2							
DIST THR (NM)	13.8	12.8	11.8	10.8	9.8	8.8	7.8	6.8	5.8	4.8	3.8	2.8	1.8							
ALTITUDE (FT)	4500	4170	3850	3530	3210	2890	2570	2250	1930	1610	1290	970	650							
CHANGE: New Procedure.	Missed Approach Climb Gradient		OCA (OCH)																	
			A	B	C	D								Ground Speed						
	LOC	2.5%	710 (682)											kt	80	100	120	140	160	180
		4.0%	420 (392)											HH834-THR (13.8 NM)	min:s	10:22	8:18	6:55	5:55	5:11
	VISUAL CIRCLING NOT AVAILABLE		N / A											ROD (5.3%)	ft / min	430	530	640	750	850

LOC RWY 25C APPROACH**NAVIGATION AIDS**

Navaid/Ident	Frequency	Coordinates		Remarks
Localizer/ITFC	109.3 MHz	22 18 30.88N	113 53 26.53E	Course 254°M
DME/ITFC	CH 30X	22 19 13.45N	113 55 24.77E	

TABULAR DESCRIPTION: LOC RWY 25C

Serial Number	Path Descriptor	Waypoint Identifier	Fly-over	Course °M (°T)	Magnetic Variation	Distance (NM)	Turn Direction	Altitude (ft)	Speed (KIAS)	VPA	Navigation Specification
01	IF	RIVMI	-	-	+3.0	-	-	-6000 +4500	-	-	RNP 1
02	TF	CANUP	-	284 (281)	+3.0	5.1	-	+4500	@180	-	RNP 1
01	IF	GONAT	-	-	+3.0	-	-	@5000	@210	-	RNP 1
02	TF	HH827	-	161 (158)	+3.0	4.2	-	+4500	-	-	RNP 1
03	TF	CANUP	-	224 (221)	+3.0	4.8	-	+4500	@180	-	RNP 1
01	IF	CANUP	-	-	+3.0	-	-	+4500	@180	-	Conventional
02	-	HH834	-	254 (251)	+3.0	4.0	-	+4500	@180	-	Conventional
03	-	RW25C	Y	254 (251)	+3.0	13.8	-	-	-	-	Conventional
04	CF	HH821	-	254 (251)	+3.0	-	-	-	-185	-	RNP 1
05	TF	HH822	-	340 (337)	+3.0	4.4	-	-	@185	-	RNP 1
06	TF	VH523	-	062 (059)	+3.0	4.6	-	-4000 +3000	@185	-	RNP 1
07	TF	VH526	-	071 (068)	+3.0	14.5	-	-	@230	-	RNP 1
08	TF	GONAT	-	071 (068)	+3.0	7.0	-	@5000	@210	-	RNP 1

Note: Coding is not provided for final approach segment. Please refer to the chart for altitude and speed restrictions.

WAYPOINT LIST

LOC RWY 25C			
Waypoint Identifier	Coordinates (WGS-84)		Cross Reference from Navaid
RIVMI (IAF)	22 24 03.96N	114 19 09.28E	
GONAT (IAF)	22 32 32.30N	114 15 27.06E	
HH827	22 28 39.55N	114 17 09.59E	
CANUP (IF)	22 25 02.54N	114 13 46.40E	ITFC DME 18.0 NM
HH834 (FAF)	22 23 44.66N	114 09 43.13E	ITFC DME 14.0 NM
SDF11.5	22 22 55.61N	114 07 10.04E	ITFC DME 11.5 NM
SDF6.1	22 21 09.51N	114 01 39.45E	ITFC DME 6.1 NM
MAPt	22 19 29.10N	113 56 27.24E	ITFC DME 1.0 NM
RW25C (THR)	22 19 12.85N	113 55 36.78E	ITFC DME 0.2 NM
HH821	22 17 54.88N	113 51 34.92E	
HH822	22 21 58.90N	113 49 43.76E	
VH523	22 24 20.51N	113 53 58.89E	
VH526	22 29 52.41N	114 08 27.15E	