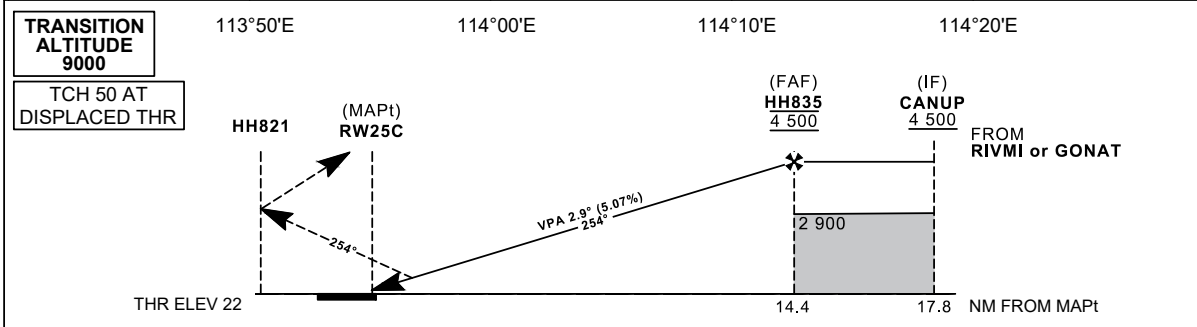
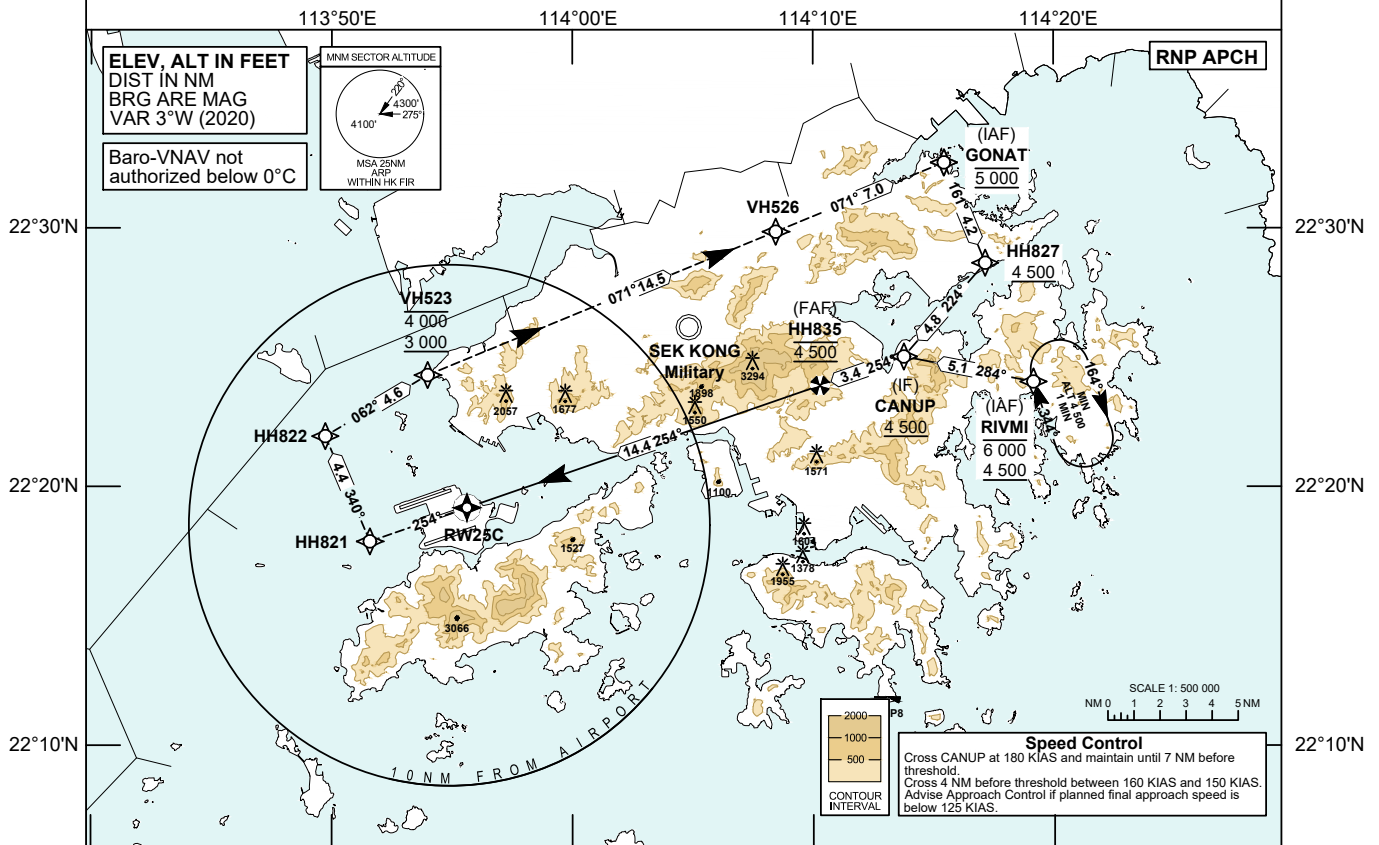


INSTRUMENT APPROACH CHART - ICAO	AERODROME ELEV 28 FT	TOWER 118.2	HONG KONG / INTL (VHHH) RNP Z RWY 25C (LNAV/VNAV only)
	HEIGHTS RELATED TO THR RWY 25C - ELEV 22 FT	APPROACH 119.1	
		DIRECTOR 119.5	

Notes 1. Simultaneous dependent operation is authorized with RWY 25L.



MISSED APPROACH
 Climb initially to 4 000 ft, from RWY25C, track 254°M to HH821, then turn right to HH822. Proceed to VH523 and cross VH523 between 3 000 ft and 4 000 ft. From VH523, climb to 5 000 ft and track to VH526 and GONAT.
 Speed restriction: 185 KIAS maximum until VH523, then maintain 230 KIAS until VH526, then maintain 210 KIAS until GONAT.

DIST THR (NM)	14.4	14	13	12	11	10	9	8	7	6	5	4	3	2
ALTITUDE (FT)	4500	4380	4080	3770	3460	3150	2840	2540	2230	1920	1610	1300	1000	690

CHANGE: New Procedure.

Missed Approach Climb Gradient	2.5%	OCA (OCH)				Ground Speed	kt	80	100	120	140	160	180
		A	B	C	D								
LNAV/VNAV	2.5%	500 (478)				HH835-THR (14.4 NM)	min:s	10:47	8:38	7:11	6:10	5:24	4:48
VISUAL CIRCLING NOT AVAILABLE		N / A				ROD (5.1%)	ft / min	410	510	620	720	820	920

RNP Z RWY 25C APPROACH**TABULAR DESCRIPTION: RNP Z RWY 25C**

Serial Number	Path Descriptor	Waypoint Identifier	Fly-over	Course °M (°T)	Magnetic Variation	Distance (NM)	Turn Direction	Altitude (ft)	Speed (KIAS)	VPA	Navigation Specification
01	IF	RIVMI	-	-	+3.0	-	-	-6000 +4500	-	-	RNP APCH
02	TF	CANUP	-	284 (281)	+3.0	5.1	-	+4500	@180	-	RNP APCH
01	IF	GONAT	-	-	+3.0	-	-	@5000	@210	-	RNP APCH
02	TF	HH827	-	161 (158)	+3.0	4.2	-	+4500	-	-	RNP APCH
03	TF	CANUP	-	224 (221)	+3.0	4.8	-	+4500	@180	-	RNP APCH
01	IF	CANUP	-	-	+3.0	-	-	+4500	@180	-	RNP APCH
02	TF	HH835	-	254 (251)	+3.0	3.4	-	@4500	@180	-	RNP APCH
03	TF	RW25C	Y	254 (251)	+3.0	14.4	-	@72	-	-2.9	RNP APCH
04	CF	HH821	-	254 (251)	+3.0	-	-	-	-185	-	RNP APCH
05	TF	HH822	-	340 (337)	+3.0	4.4	-	-	@185	-	RNP APCH
06	TF	VH523	-	062 (059)	+3.0	4.6	-	-4000 +3000	@185	-	RNP APCH
07	TF	VH526	-	071 (068)	+3.0	14.5	-	-	@230	-	RNP APCH
08	TF	GONAT	-	071 (068)	+3.0	7.0	-	@5000	@210	-	RNP APCH

WAYPOINT LIST

RNP Z RWY 25C		
Waypoint Identifier	Coordinates (WGS-84)	
RIVMI (IAF)	22 24 03.96N	114 19 09.28E
GONAT (IAF)	22 32 32.30N	114 15 27.06E
HH827	22 28 39.55N	114 17 09.59E
CANUP (IF)	22 25 02.54N	114 13 46.40E
HH835 (FAF)	22 23 55.53N	114 10 16.99E
RW25C (THR)	22 19 12.85N	113 55 36.78E
HH821	22 17 54.88N	113 51 34.92E
HH822	22 21 58.90N	113 49 43.76E
VH523	22 24 20.51N	113 53 58.89E
VH526	22 29 52.41N	114 08 27.15E