

**INSTRUMENT APPROACH CHART - ICAO**

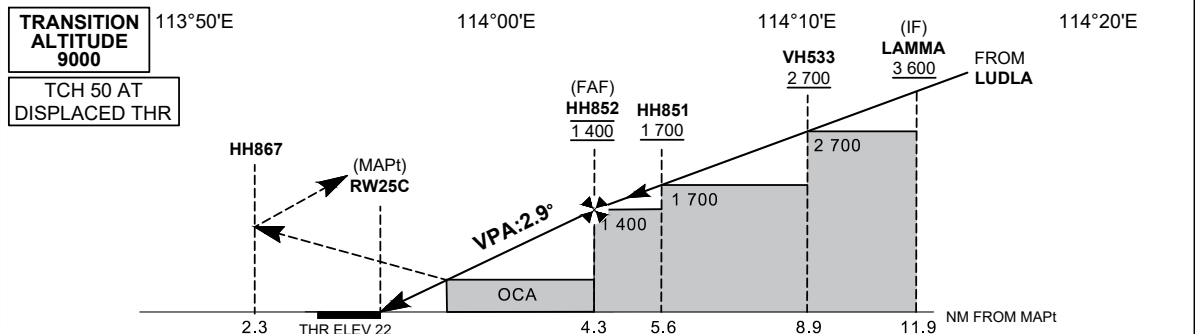
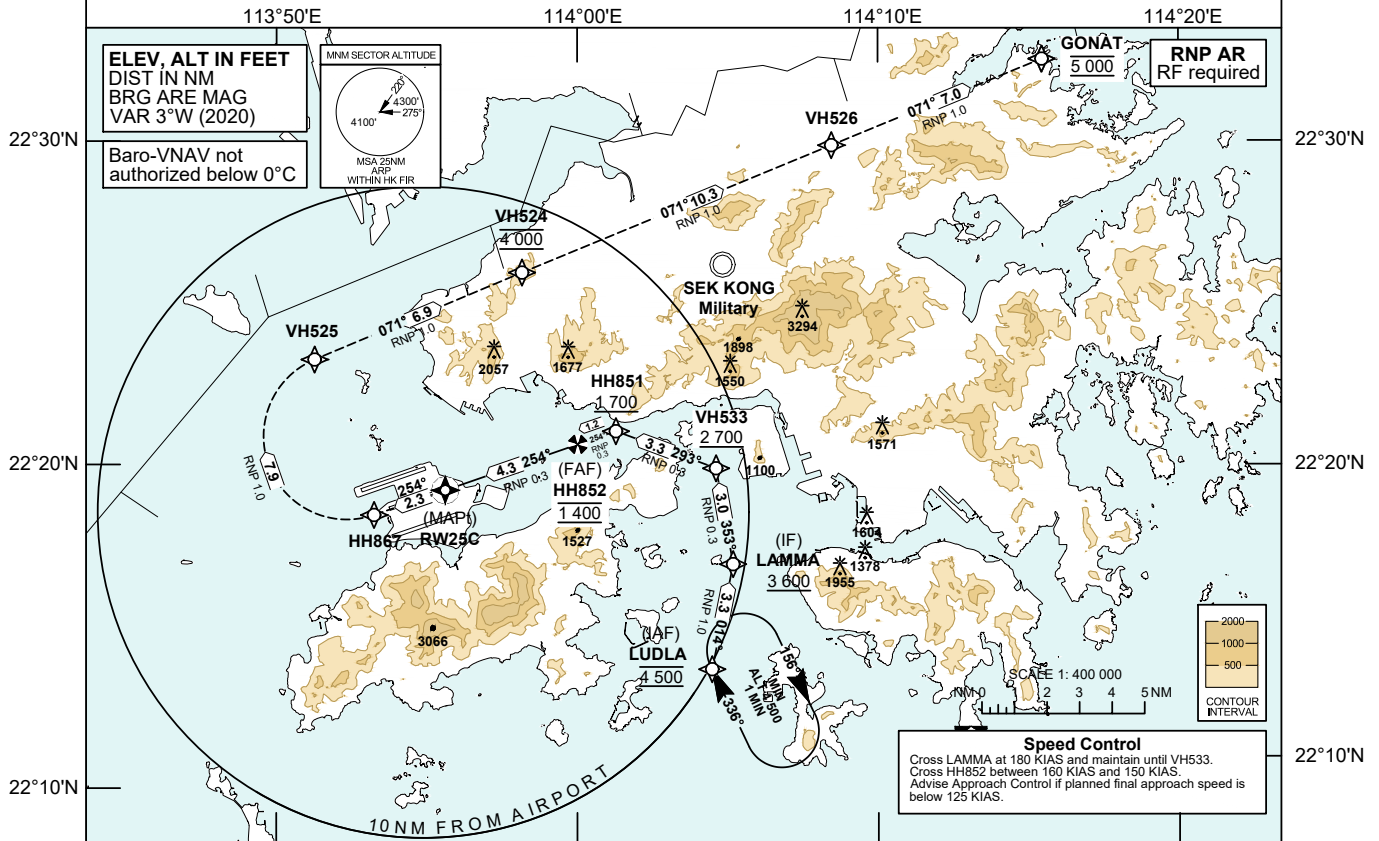
**AERODROME ELEV 28 FT**  
 HEIGHTS RELATED TO  
 THR RWY 25C - ELEV 22 FT

**TOWER** 118.2  
**APPROACH** 119.1  
**DIRECTOR** 119.5

**HONG KONG / INTL (VHHH)**  
**RNP Y RWY 25C (AR)**

**Authorization from HONG KONG CAD is Required (Refer to the relevant AIC for application procedures)**

- Notes**
1. RNP AR APCH: RNP 0.3 in Intermediate segment. RNP values are depicted on Plan View for each applicable leg.
  2. Simultaneous dependent operation is authorized with RWY 25L.
  3. Do not accept radar vectors inside LUDLA.



**MISSED APPROACH**

Climb initially to 4 000 ft. From RWY25C, track 254°M to HH867, then turn right to VH525. Proceed to VH524 and cross VH524 at 4 000 ft. From VH524, climb to 5 000 ft and track to VH526 and GONAT.  
 Speed restriction: 185 KIAS maximum until VH525, then maintain 230 KIAS until VH526, then maintain 210 KIAS until GONAT.

DIST THR (NM)	4.3	4	3	2
ALTITUDE (FT)	1400	1300	1000	690

Missed Approach Climb Gradient	OCA (OCH)				Ground Speed	kt	80	100	120	140	160	180
	A	B	C	D								
RNP 0.30	2.5%	470 (448)	480 (458)	490 (468)	500 (478)							
VISUAL CIRCLING	N / A				HH852-THR (4.3 NM)	min:s	3:14	2:35	2:09	1:51	1:37	1:26
NOT AVAILABLE					ROD (5.1%)	ft / min	410	510	620	720	820	920

CHANGE: New Procedure.

**RNP Y RWY 25C (AR) APPROACH****TABULAR DESCRIPTION: RNP Y RWY 25C (AR)**

Serial Number	Path Descriptor	Waypoint Identifier	Fly-over	Course °M (°T)	Magnetic Variation	Distance (NM)	Turn Direction	Altitude (ft)	Speed (KIAS)	VPA	Navigation Specification (RNP Value)
01	IF	LUDLA	-	-	+3.0	-	-	@4500	-	-	RNP AR APCH (RNP 1.0)
02	TF	LAMMA	-	014 (011)	+3.0	3.3	-	+3600	@180	-	RNP AR APCH (RNP 1.0)
03	TF	VH533	-	353 (350)	+3.0	3.0	-	+2700	@180	-	RNP AR APCH (RNP 0.3)
04	TF	HH851	-	293 (290)	+3.0	3.3	-	+1700	-	-	RNP AR APCH (RNP 0.3)
05	TF	HH852	-	254 (251)	+3.0	1.2	-	@1400	-160 +150	-	RNP AR APCH (RNP 0.3)
06	TF	RW25C	Y	254 (251)	+3.0	4.3	-	@72	-	-2.9	RNP AR APCH (RNP 0.3)
07	TF	HH867	-	254 (251)	+3.0	2.3	-	-	-	-	RNP AR APCH (RNP 1.0)
08	RF Centre: HH987 r=2.565 NM	VH525	-	-	+3.0	7.9	R	-	@185	-	RNP AR APCH (RNP 1.0)
09	TF	VH524	-	071 (068)	+3.0	6.9	-	@4000	-	-	RNP AR APCH (RNP 1.0)
10	TF	VH526	-	071 (068)	+3.0	10.3	-	-	@230	-	RNP AR APCH (RNP 1.0)
11	TF	GONAT	-	071 (068)	+3.0	7.0	-	@5000	@210	-	RNP AR APCH (RNP 1.0)

**WAYPOINT LIST**

RNP Y RWY 25C (AR)		
Waypoint Identifier	Coordinates (WGS-84)	
LUDLA (IAF)	22 13 40.79N	114 04 28.75E
LAMMA (IF)	22 16 55.61N	114 05 10.55E
VH533	22 19 53.47N	114 04 36.72E
HH851	22 21 02.31N	114 01 17.04E
HH852 (FAF)	22 20 37.80N	114 00 00.77E
RW25C (MAPT)	22 19 12.85N	113 55 36.78E
HH867	22 18 27.11N	113 53 14.84E
VH525	22 23 15.38N	113 51 16.25E
VH524	22 25 56.63N	113 58 09.87E
VH526	22 29 52.41N	114 08 27.15E
GONAT	22 32 32.30N	114 15 27.06E
RF Arc Centre Identifier	Coordinates (WGS-84)	
HH987	22 20 53.00N	113 52 20.49E