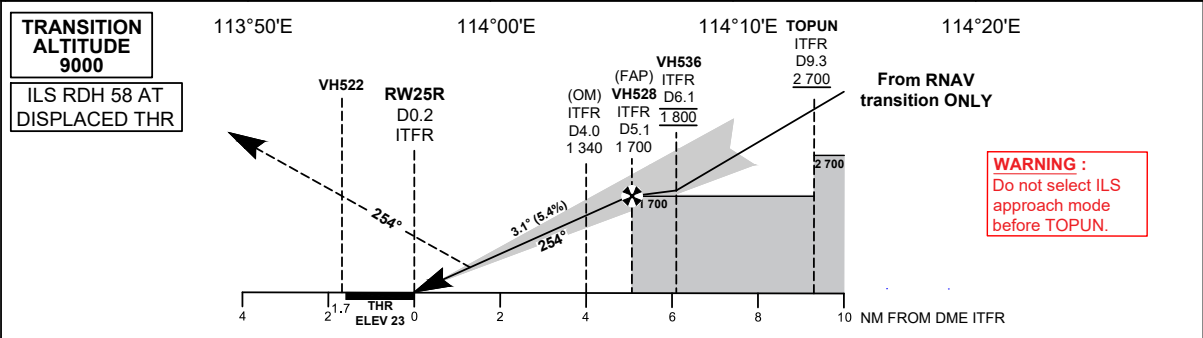
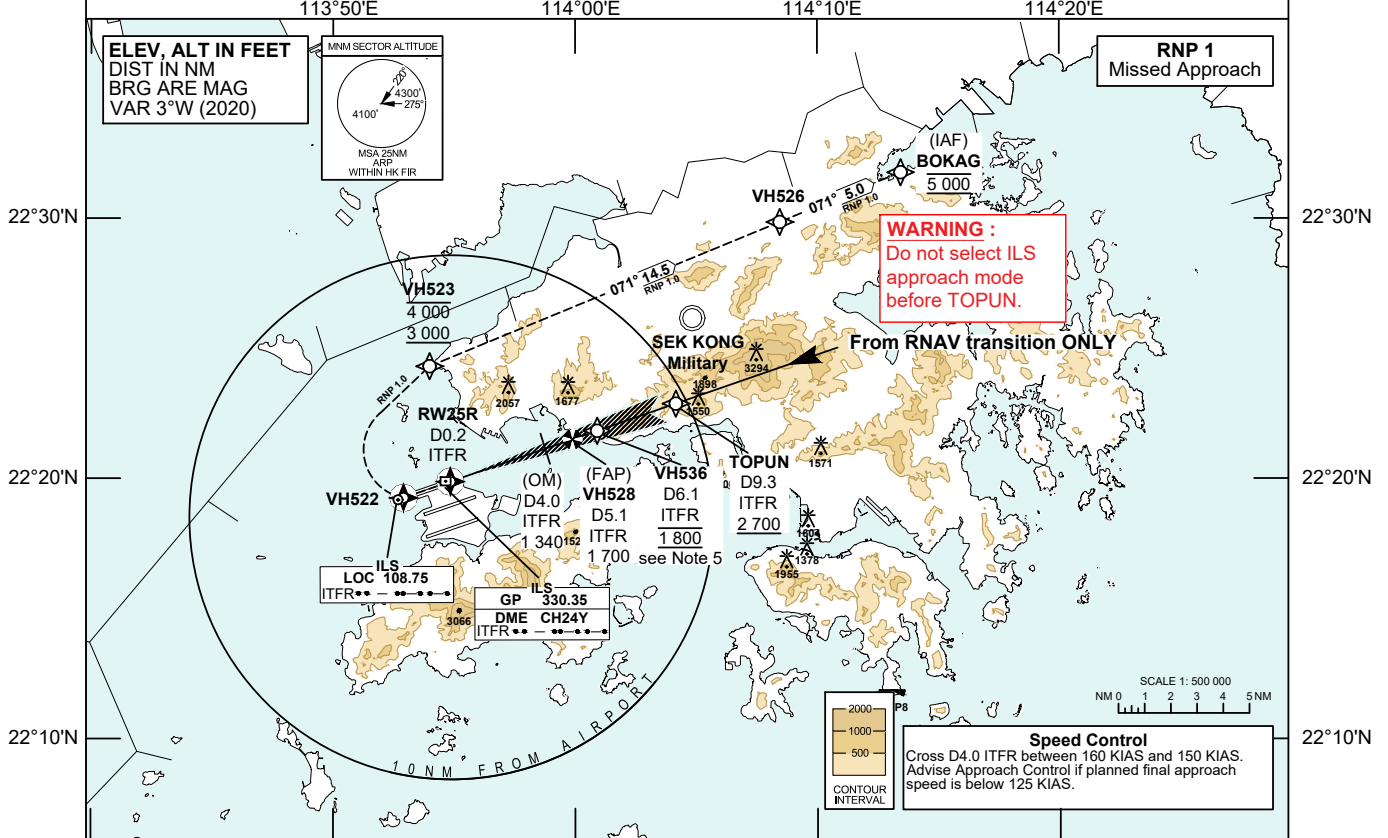


INSTRUMENT APPROACH CHART - ICAO	AERODROME ELEV 28 FT	TOWER	118.7	HONG KONG / INTL (VHHH) ILS RWY 25R
	HEIGHTS RELATED TO THR RWY 25R - ELEV 23 FT	APPROACH DIRECTOR	119.1	
		DIRECTOR	119.5	

- Warnings**
- GP SIGNAL UNUSABLE BELOW ELEVATION ANGLE OF 1.8°
 - PILOTS SHOULD MONITOR FOR FALSE CAPTURE OF LOC AND GP BY COMPARING INDICATIONS WITH AIRCRAFT POSITION AND ALTITUDE
- Notes**
- Connect from RNAV transition only. See AD 2-VHHH-IAC-06B for details.
 - If unable RNP 1 during missed approach, continue on the published missed approach track, climb and pass Minimum Sector Altitude (MSA) 4 300 ft as soon as practicable, and continue to 5 000 ft.
 - DME is required. If unable to receive ITFR DME pilot shall advise ATC and will receive equivalent radar ranges for FAP (D5.1 ITFR) and OM Fix (D4.0 ITFR).
 - Simultaneous dependent operation is authorized with RWY 25L.
 - Cross VH536 at 1 800 ft unless established on glide slope.



MISSED APPROACH
 Climb initially to 4 000 ft and track 254°M to VH522, then turn right direct to VH523 and cross VH523 between 3000 ft and 4000 ft. From VH523, climb to 5 000 ft and track to VH526 and BOKAG.
 Speed restriction: 185 KIAS maximum until VH523, then maintain 230 KIAS until VH526, then maintain 210 KIAS until BOKAG.

DME ITFR	5.1	5	4	3	2	1							
DIST THR (NM)	4.9	4.8	3.8	2.8	1.8	0.8							
ALTITUDE (FT)	1700	1670	1340	1000	670	340							
Missed Approach Climb Gradient		OCA (OCH)				Ground Speed							
ILS CAT I	2.5%	A	B	C	D	kt	80	100	120	140	160	180	
	6.5%	1425 (1402)	1435 (1412)	1445 (1422)	1455 (1432)	VH528-THR (4.9 NM)	min:s	3:43	2:58	2:29	2:07	1:51	1:39
VISUAL CIRCLING NOT AVAILABLE		N / A				ROD (5.4%)	ft / min	440	550	660	770	880	990

CHANGE: Runway 07C/25C reopened.

ILS RWY 25R APPROACH**NAVIGATION AIDS**

Navaid/Ident	Frequency	Coordinates		Remarks
Localizer/ITFR	108.75 MHz	22 19 12.67N	113 52 40.61E	Course 254°M
Glide Path	330.35 MHz	22 19 55.16N	113 54 38.56E	3.1° glide slope Co-located
DME/ITFR	CH 24Y			

TABULAR DESCRIPTION: Missed Approach Segment

Serial Number	Path Descriptor	Waypoint Identifier	Fly-over	Course °M (°T)	Magnetic Variation	Distance (NM)	Turn Direction	Altitude (ft)	Speed (KIAS)	VPA	Navigation Specification
01	CF	VH522	Y	254 (251)	+3.0	-	-	-	-	-	RNP 1
02	DF	VH523	-	-	+3.0	-	R	-4000 +3000	@185	-	RNP 1
03	TF	VH526	-	071 (068)	+3.0	14.5	-	-	@230	-	RNP 1
04	TF	BOKAG	-	071 (068)	+3.0	5.0	-	@5000	@210	-	RNP 1

Note: Coding is not provided for final approach segment. Please refer to the chart for altitude and speed restrictions.

WAYPOINT LIST

ILS RWY 25R			
Waypoint Identifier	Coordinates (WGS-84)		Cross Reference from Navaid
TOPUN	22 22 54.17N	114 04 09.15E	ITFR DME 9.3 NM
VH536	22 21 51.55N	114 00 54.18E	ITFR DME 6.1 NM
VH528 (FAP)	22 21 31.88N	113 59 52.97E	ITFR DME 5.1 NM
RW25R (THR)	22 19 54.45N	113 54 50.24E	ITFR DME 0.2 NM
VH522	22 19 17.08N	113 52 54.28E	
VH523	22 24 20.51N	113 53 58.89E	
VH526	22 29 52.41N	114 08 27.15E	
BOKAG	22 31 46.65N	114 13 27.06E	