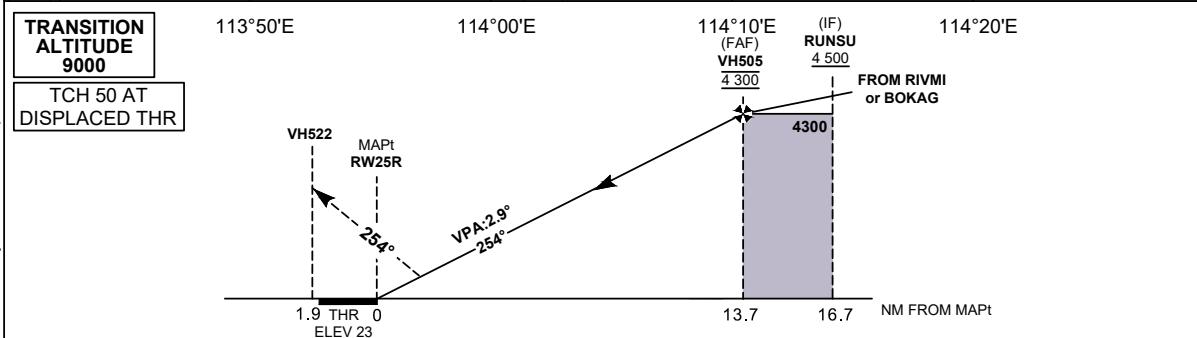
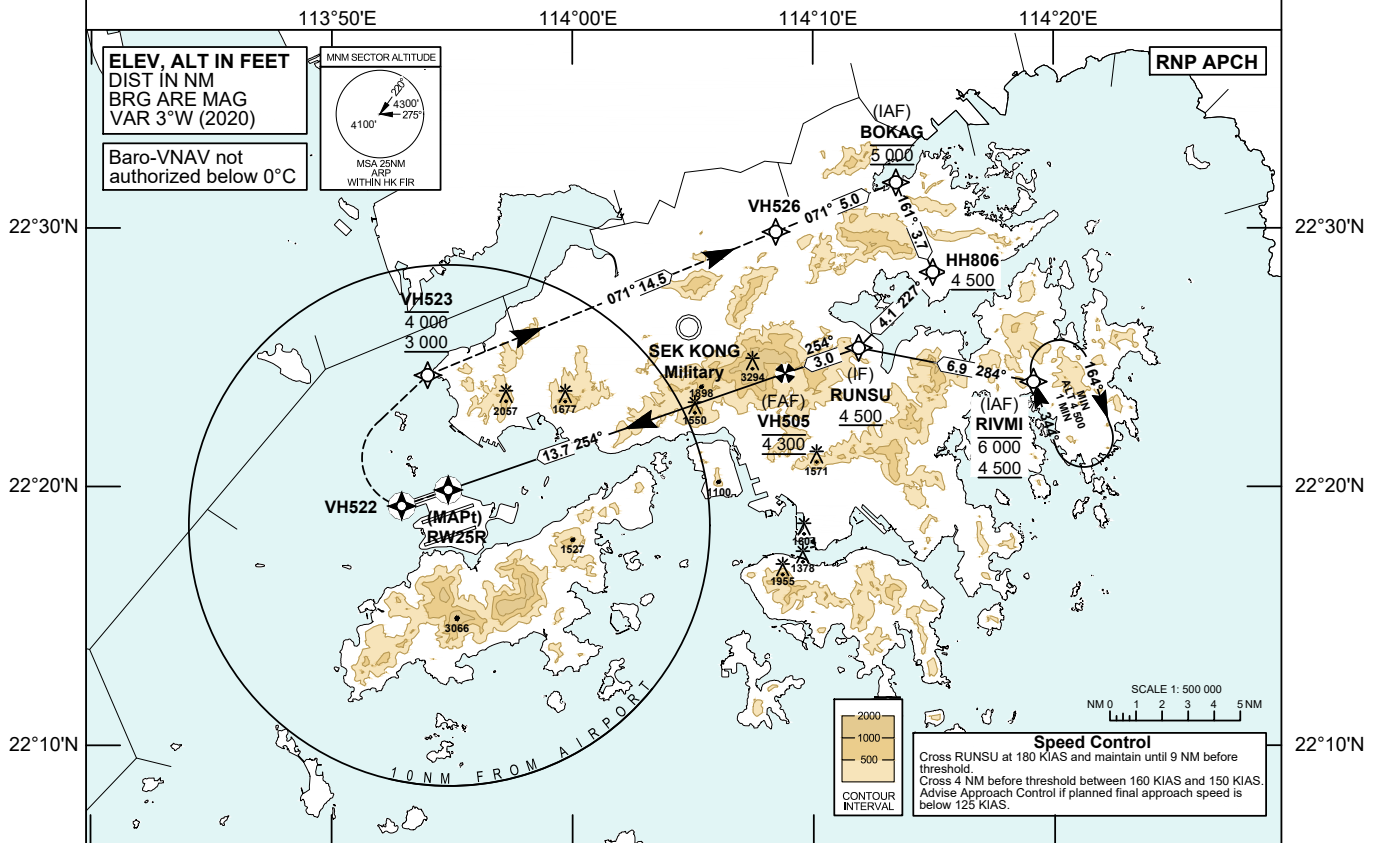


INSTRUMENT APPROACH CHART - ICAO	AERODROME ELEV 28 FT	TOWER	118.7	HONG KONG / INTL (VHHH) RNP Z RWY 25R (LNAV/VNAV only)
	HEIGHTS RELATED TO THR RWY 25R - ELEV 23 FT	APPROACH DIRECTOR	119.1	
			119.5	

Notes 1. Simultaneous dependent operation is authorized with RWY 25L.



MISSED APPROACH
 Climb initially to 4 000 ft. From RW25R track 254°M to VH522, then turn right direct to VH523 and cross VH523 between 3 000 ft and 4 000 ft. From VH523, climb to 5 000 ft and track to VH526 and BOKAG.
 Speed restriction: 185 KIAS maximum until VH523, then maintain 230 KIAS until VH526, then maintain 210 KIAS until BOKAG.

DIST THR (NM)	13.7	13	12	11	10	9	8	7	6	5	4	3	2
ALTITUDE (FT)	4300	4070	3770	3460	3150	2840	2530	2230	1920	1610	1300	1000	690
Missed Approach Climb Gradient	OCA (OCH)												
	A	B	C	D	Ground Speed	kt	80	100	120	140	160	180	
LNAV/VNAV	2.5%	1425 (1402)	1435 (1412)	1445 (1422)		1455 (1432)	VH505-THR (13.7 NM)	min:s	10:17	8:14	6:52	5:53	5:09
	5.6%	485 (462)	495 (472)	505 (482)	515 (492)	ROD (5.1%)	ft / min	410	510	620	720	820	920
VISUAL CIRCLING	NOT AVAILABLE												

CHANGE: Revised Initial Approach; speed control; Runway 07C/25C reopened.

RNP Z RWY 25R APPROACH**TABULAR DESCRIPTION: RNP Z RWY 25R**

Serial Number	Path Descriptor	Waypoint Identifier	Fly-over	Course °M (°T)	Magnetic Variation	Distance (NM)	Turn Direction	Altitude (ft)	Speed (KIAS)	VPA	Navigation Specification
01	IF	RIVMI	-	-	+3.0	-	-	-6000 +4500	-	-	RNP APCH
02	TF	RUNSU	-	284 (281)	+3.0	6.9	-	+4500	@180	-	RNP APCH
01	IF	BOKAG	-	-	+3.0	-	-	@5000	@210	-	RNP APCH
02	TF	HH806	-	161 (158)	+3.0	3.7	-	+4500	-	-	RNP APCH
03	TF	RUNSU	-	227 (224)	+3.0	4.1	-	+4500	@180	-	RNP APCH
01	IF	RUNSU	-	-	+3.0	-	-	+4500	@180	-	RNP APCH
02	TF	VH505	-	254 (251)	+3.0	3.0	-	@4300	@180	-	RNP APCH
03	TF	RW25R	Y	254 (251)	+3.0	13.7	-	@73	-	-2.9	RNP APCH
04	CF	VH522	Y	254 (251)	+3.0	1.9	-	-	-	-	RNP APCH
05	DF	VH523	-	-	+3.0	-	R	-4000 +3000	@185	-	RNP APCH
06	TF	VH526	-	071 (068)	+3.0	14.5	-	-	@230	-	RNP APCH
07	TF	BOKAG	-	071 (068)	+3.0	5.0	-	@5000	@210	-	RNP APCH

WAYPOINT LIST

RNP Z RWY 25R		
Waypoint Identifier	Coordinates (WGS-84)	
RIVMI (IAF)	22 24 03.96N	114 19 09.28E
BOKAG (IAF)	22 31 46.65N	114 13 27.06E
HH806	22 28 18.61N	114 14 58.76E
RUNSU	22 25 22.96N	114 11 53.57E
VH505 (FAF)	22 24 24.16N	114 08 49.88E
RW25R (THR)	22 19 54.45N	113 54 50.24E
VH522	22 19 17.08N	113 52 54.28E
VH523	22 24 20.51N	113 53 58.89E
VH526	22 29 52.41N	114 08 27.15E