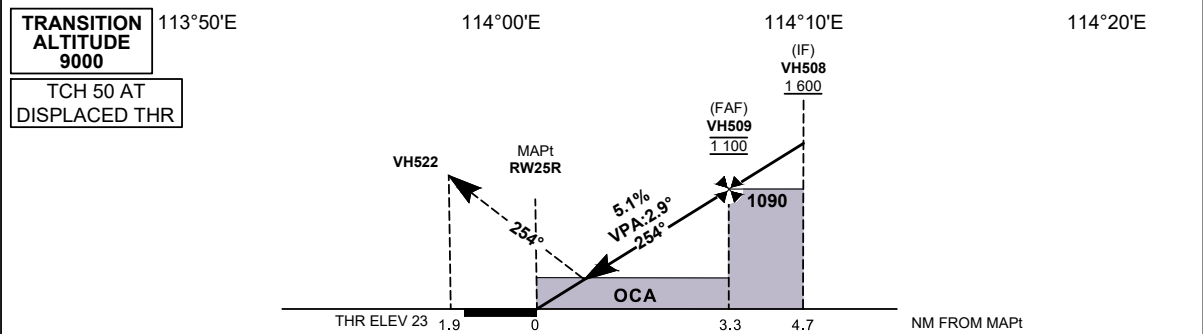
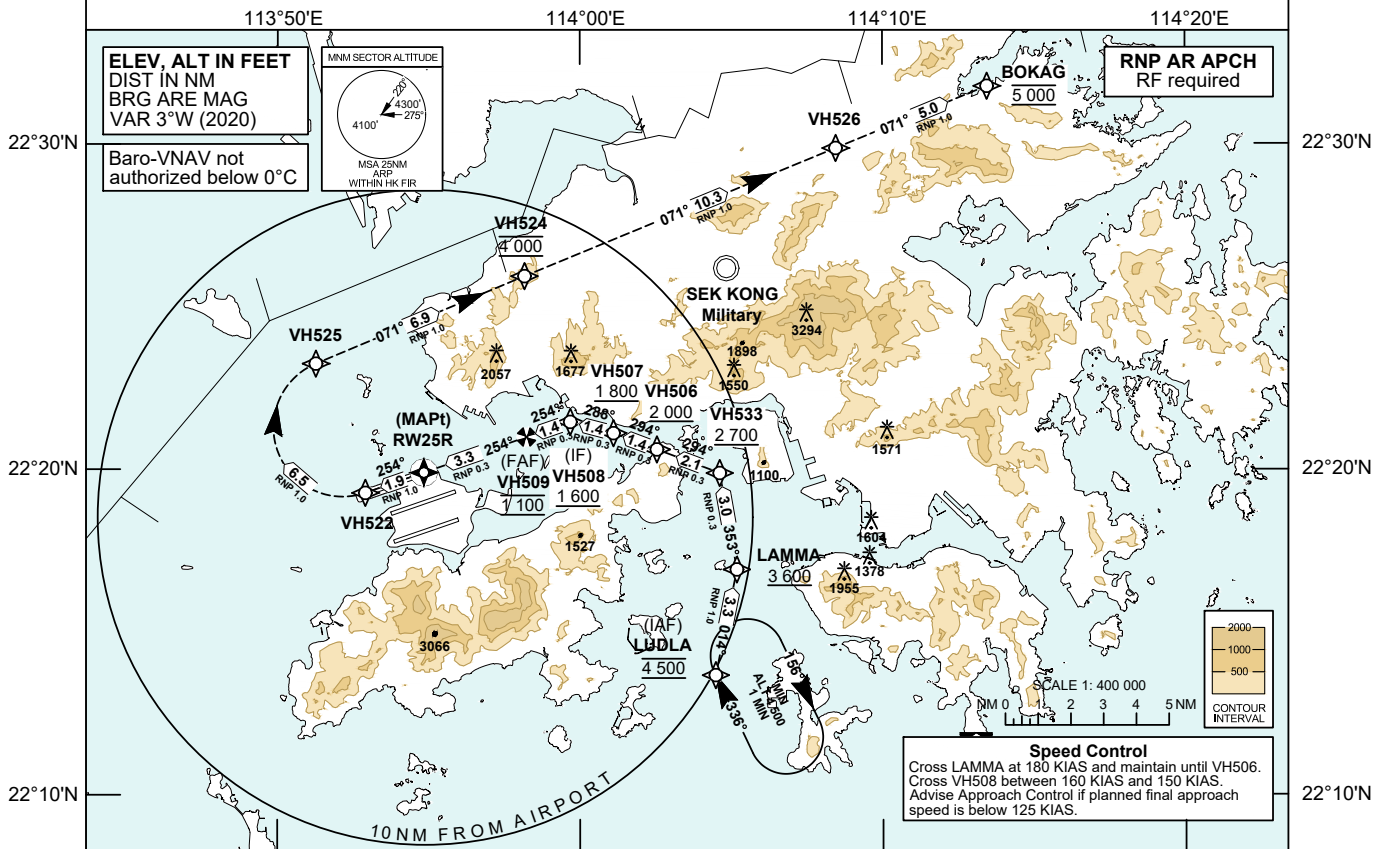


INSTRUMENT APPROACH CHART - ICAO	AERODROME ELEV 28 FT HEIGHTS RELATED TO THR RWY 25R - ELEV 23 FT	TOWER 118.7 APPROACH 119.1 DIRECTOR 119.5	HONG KONG / INTL (VHHH) RNP Y RWY 25R (AR)
---	--	---	---

- Notes**
1. RNP AR APCH: RNP 0.3 within Initial and Intermediate segments. RNP values are depicted on Plan View for each applicable leg.
 2. Aircraft must obtain approval from Hong Kong Civil Aviation Department for RNP AR APCH.
 3. Simultaneous dependent operation is authorized with RWY 25L.
 4. Do not accept radar vectors inside LUDLA.



MISSED APPROACH
 Climb initially to 4 000 ft. From RWY25R track 254°M to VH522, then turn right direct to VH525, then VH524 and cross VH524 at 4 000 ft. From VH524 climb to 5 000 ft and track to VH526 and BOKAG.
 Speed restriction: 185 KIAS maximum until VH525, then maintain 230 KIAS until VH526, then maintain 210 KIAS until BOKAG.

DIST THR (NM)	3.3	3	2										
ALTITUDE (FT)	1100	1000	690										
Missed Approach Climb Gradient		OCA (OCH)				Ground Speed							
RNP 0.30	4.0%	A	B	C	D	kt	80	100	120	140	160	180	
		(485) (462)	(495) (472)	(505) (482)	(515) (492)	VH509-THR (3.3NM)	min:s	2:29	2:00	1:40	1:25	1:15	1:06
VISUAL CIRCLING NOT AVAILABLE		N / A				ROD (5.1%)	ft / min	410	510	620	720	820	920

CHANGE: Revised Initial Approach; Runway 07C/25C reopened.

RNP Y RWY 25R (AR) APPROACH**TABULAR DESCRIPTION: RNP Y RWY 25R (AR)**

Serial Number	Path Descriptor	Waypoint Identifier	Fly-over	Course °M (°T)	Magnetic Variation	Distance (NM)	Turn Direction	Altitude (ft)	Speed (KIAS)	VPA	Navigation Specification (RNP Value)
01	IF	LUDLA	-	-	+3.0	-	-	@4500	-	-	RNP AR APCH (RNP 1.0)
02	TF	LAMMA	-	014 (011)	+3.0	3.3	-	+3600	@180	-	RNP AR APCH (RNP 1.0)
03	TF	VH533	-	353 (350)	+3.0	3.0	-	+2700	@180	-	RNP AR APCH (RNP 0.3)
04	TF	VH506	-	294 (291)	+3.0	2.1	-	+2000	@180	-	RNP AR APCH (RNP 0.3)
05	TF	VH507	-	294 (291)	+3.0	1.4	-	+1800	-	-	RNP AR APCH (RNP 0.3)
06	TF	VH508	-	288 (285)	+3.0	1.4	-	+1600	-160 +150	-	RNP AR APCH (RNP 0.3)
07	TF	VH509	-	254 (251)	+3.0	1.4	-	@1100	-	-	RNP AR APCH (RNP 0.3)
08	TF	RW25R	Y	254 (251)	+3.0	3.3	-	@73	-	-2.9	RNP AR APCH (RNP 0.3)
09	CF	VH522	-	254 (251)	+3.0	1.9	-	-	-	-	RNP AR APCH (RNP 1.0)
10	RF Centre: VH994 r=2.120 NM	VH525	-	-	+3.0	6.5	R	-	@185	-	RNP AR APCH (RNP 1.0)
11	TF	VH524	-	071 (068)	+3.0	6.9	-	@4000	-	-	RNP AR APCH (RNP 1.0)
12	TF	VH526	-	071 (068)	+3.0	10.3	-	-	@230	-	RNP AR APCH (RNP 1.0)
13	TF	BOKAG	-	071 (068)	+3.0	5.0	-	@5000	@210	-	RNP AR APCH (RNP 1.0)

WAYPOINT LIST

RNP Y RWY 25R (AR)		
Waypoint Identifier	Coordinates (WGS-84)	
LUDLA (IAF)	22 13 40.79N	114 04 28.75E
LAMMA	22 16 55.61N	114 05 10.55E
VH533	22 19 53.47N	114 04 36.72E
VH506	22 20 36.99N	114 02 32.27E
VH507	22 21 07.06N	114 01 06.23E
VH508 (IF)	22 21 27.88N	113 59 40.53E
VH509 (FAF)	22 20 59.94N	113 58 13.67E
RW25R (MAPT)	22 19 54.45N	113 54 50.24E
VH522	22 19 17.08N	113 52 54.28E
VH525	22 23 15.38N	113 51 16.25E
VH524	22 25 56.63N	113 58 09.87E
VH526	22 29 52.41N	114 08 27.15E
BOKAG	22 31 46.65N	114 13 27.06E
RF Arc Centre Identifier	Coordinates (WGS-84)	
VH994	22 21 17.69N	113 52 09.35E