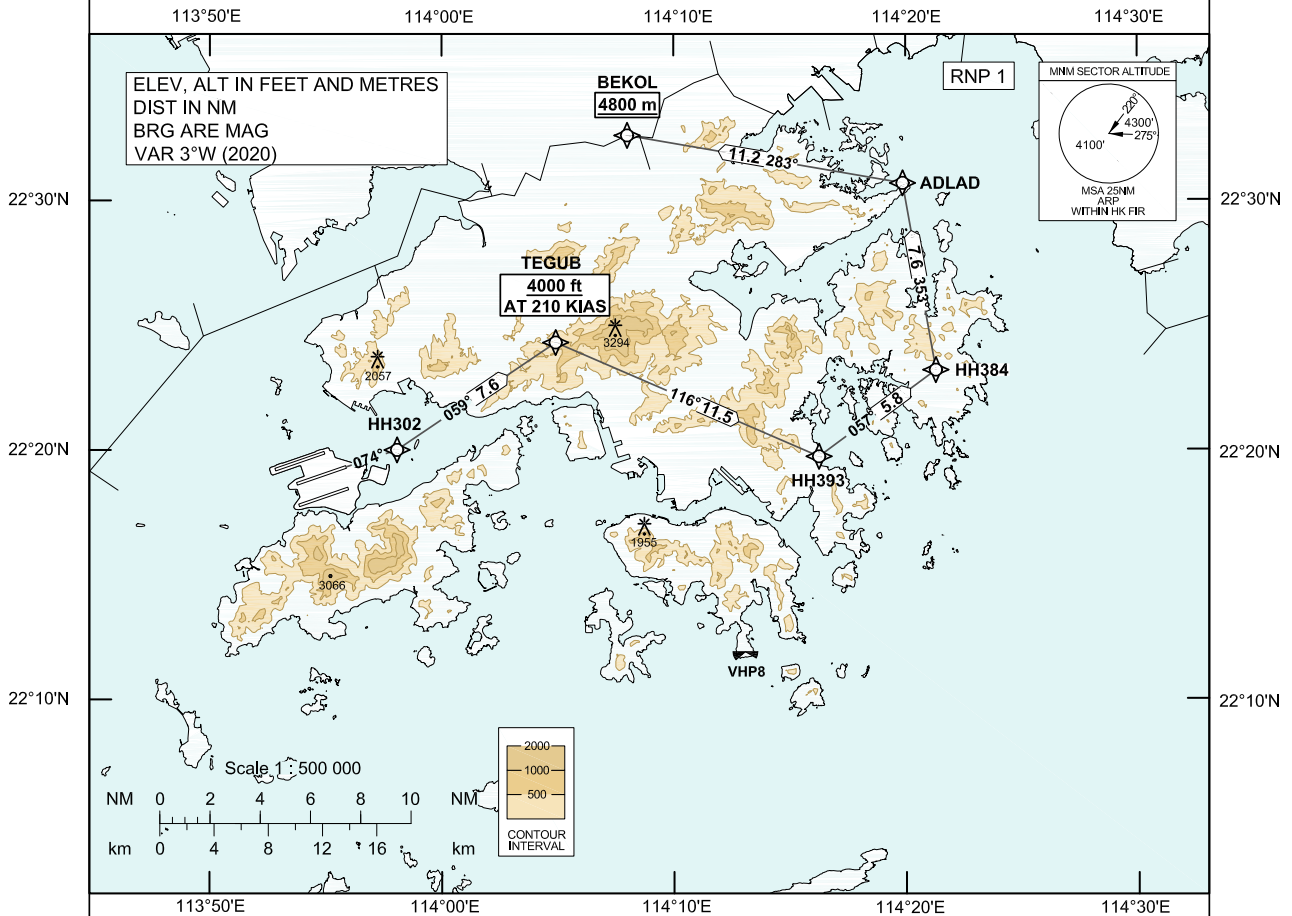


**STANDARD DEPARTURE CHART-  
INSTRUMENT (SID) - ICAO**

Transition Altitude 9 000 ft	
Hong Kong Tower	118.2
Hong Kong Departure	123.8

**HONG KONG / Intl (VHHH)  
RNAV (GNSS) ADLAD 1T SID RWY 07C**

1. In the event that PBN performance ceases to comply with the requirements for RNP 1 after departure, pilots must notify ATC as soon as possible. ATC assistance would be provided as necessary.
2. Only specific categories of flights (e.g. SAR) as stated in GEN 1.5 para 3.5.3.5 are exempted from the RNP 1 requirement. These flights shall fly the contingency procedures as detailed in VHHH AD 2.22 para 2.2.3.5.



**ADLAD 1T SID RWY 07C**

**CLIMB REQUIREMENT**

Initial climb to 5 000 ft. Expect further climb when instructed by ATC. Comply with all the published altitude restrictions. If unable to comply with the vertical profile, pilot shall inform ATC prior to start-up.

**TERRAIN CLEARANCE**

Minimum climb gradient of 6.8% (414 ft/NM) until passing 3 900 ft is required.

**SPEED RESTRICTION**

Speed restriction of 210 KIAS at TEGUB.

CHANGE: New procedure.

**FMC Database Coding Reference for Hong Kong RNAV<sub>(GNSS)</sub> SID****TABULAR DESCRIPTION: ADLAD 1T RWY 07C**

Serial Number	Path Descriptor	Waypoint Identifier	Fly-over	Course °M (°T)	Magnetic Variation	Distance (NM)	Turn Direction	Altitude (ft)	Speed (KIAS)	Navigation Specification
01	CF	HH302	-	074 (071)	+3.0	-	-	-	-	RNP 1
02	TF	TEGUB	-	059 (056)	+3.0	7.6	-	+4000	@210	RNP 1
03	TF	HH393	-	116 (113)	+3.0	11.5	-	-	-	RNP 1
04	TF	HH384	-	057 (054)	+3.0	5.8	-	-	-	RNP 1
05	TF	ADLAD	-	353 (350)	+3.0	7.6	-	-	-	RNP 1
06	TF	BEKOL	-	283 (280)	+3.0	11.2	-	+4800m	-	RNP 1

**WAYPOINT LIST**

ADLAD 1T RWY 07C		
Waypoint Identifier	Coordinates (WGS-84)	
HH302	22 20 00.43N	113 58 04.56E
TEGUB	22 24 18.28N	114 04 54.69E
HH393	22 19 43.83N	114 16 15.26E
HH384	22 23 11.51N	114 21 17.83E
ADLAD	22 30 40.74N	114 19 52.57E
BEKOL	22 32 36.00N	114 08 00.00E