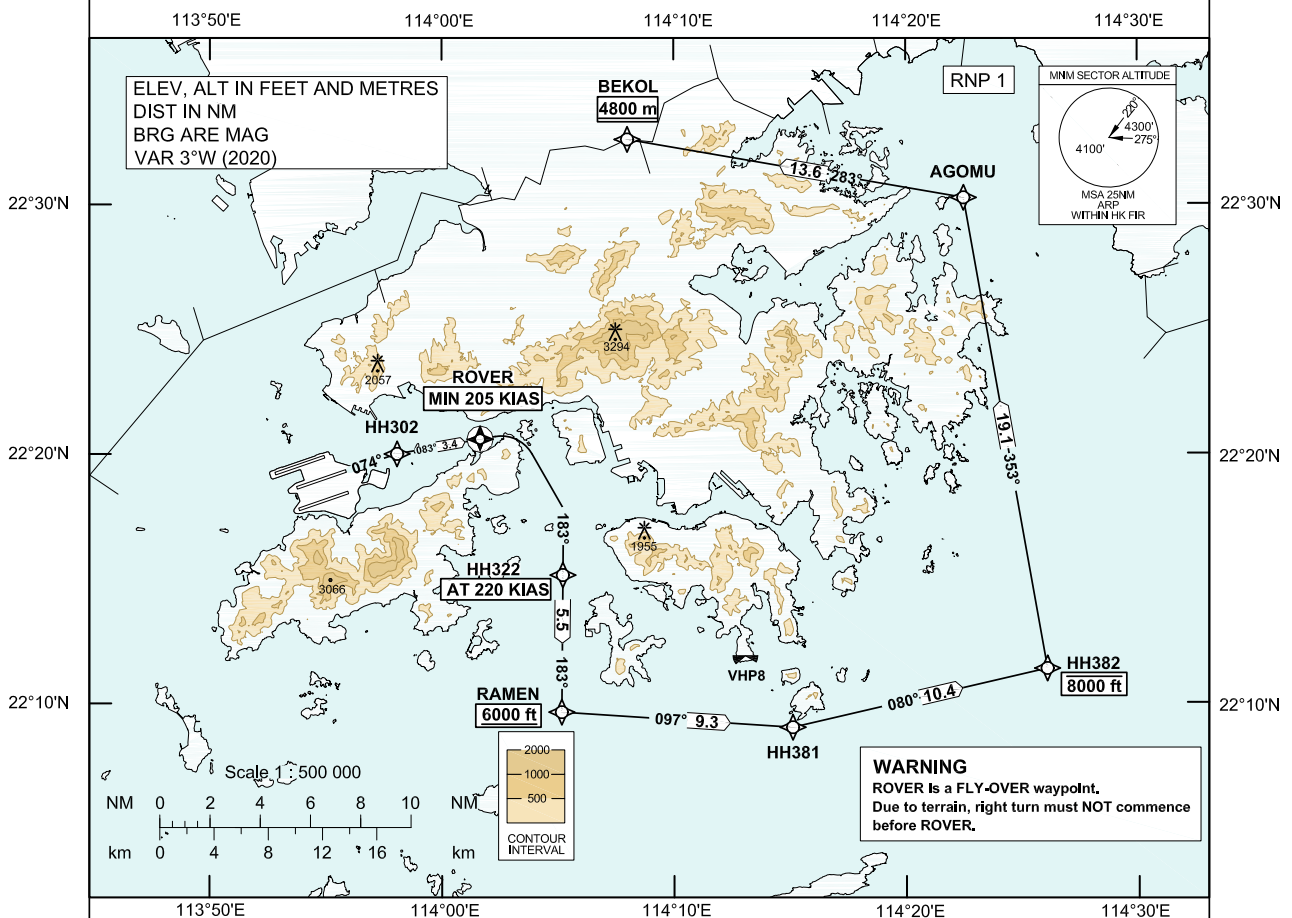


STANDARD DEPARTURE CHART- INSTRUMENT (SID) - ICAO	<table border="1" style="width: 100%; border-collapse: collapse;"> <tr><td>Transition Altitude 9 000 ft</td></tr> <tr><td>Hong Kong Tower 118.2</td></tr> <tr><td>Hong Kong Departure 123.8</td></tr> </table>	Transition Altitude 9 000 ft	Hong Kong Tower 118.2	Hong Kong Departure 123.8	HONG KONG / Intl (VHHH) RNAV (GNSS) BEKOL 1C SID RWY 07C
Transition Altitude 9 000 ft					
Hong Kong Tower 118.2					
Hong Kong Departure 123.8					

1. In the event that PBN performance ceases to comply with the requirements for RNP 1 after departure, pilots must notify ATC as soon as possible. ATC assistance would be provided as necessary.
2. Only specific categories of flights (e.g. SAR) as stated in GEN 1.5 para 3.5.3.5 are exempted from the RNP 1 requirement. These flights shall fly the contingency procedures as detailed in VHHH AD 2.22 para 2.2.3.5.
3. ROVER is a **FLY-OVER** waypoint. All other waypoints are fly-by.



BEKOL 1C SID RWY 07C

CLIMB REQUIREMENT
Initial climb to 5 000 ft. Expect further climb when instructed by ATC. Comply with all the published altitude restrictions. If unable to comply with the vertical profile, pilot shall inform ATC prior to start-up.

TERRAIN CLEARANCE
Minimum climb gradient of 3.8% (231 ft/NM) until passing 1 300 ft is required.

SPEED RESTRICTION
Speed restriction of 205 KIAS or greater at ROVER and 220 KIAS until HH322.

CHANGE: New procedure.

FMC Database Coding Reference for Hong Kong RNAV_(GNSS) SID**TABULAR DESCRIPTION: BEKOL 1C RWY 07C**

Serial Number	Path Descriptor	Waypoint Identifier	Fly-over	Course °M (°T)	Magnetic Variation	Distance (NM)	Turn Direction	Altitude (ft)	Speed (KIAS)	Navigation Specification
01	CF	HH302	-	074 (071)	+3.0	-	-	-	-	RNP 1
02	TF	ROVER	Y	083 (080)	+3.0	3.4	-	-	+205	RNP 1
03	CF	HH322	-	183 (180)	+3.0	-	R	-	@220	RNP 1
04	TF	RAMEN	-	183 (180)	+3.0	5.5	-	+6000	-	RNP 1
05	TF	HH381	-	097 (094)	+3.0	9.3	-	-	-	RNP 1
06	TF	HH382	-	080 (077)	+3.0	10.4	-	-8000	-	RNP 1
07	TF	AGOMU	-	353 (350)	+3.0	19.1	-	-	-	RNP 1
08	TF	BEKOL	-	283 (280)	+3.0	13.6	-	+4800m	-	RNP 1

WAYPOINT LIST

BEKOL 1C RWY 07C		
Waypoint Identifier	Coordinates (WGS-84)	
HH302	22 20 00.43N	113 58 04.56E
ROVER	22 20 35.58N	114 01 39.12E
HH322	22 15 08.88N	114 05 12.88E
RAMEN	22 09 39.22N	114 05 09.89E
HH381	22 09 02.10N	114 15 06.66E
HH382	22 11 23.06N	114 26 04.39E
AGOMU	22 30 15.17N	114 22 29.86E
BEKOL	22 32 36.00N	114 08 00.00E