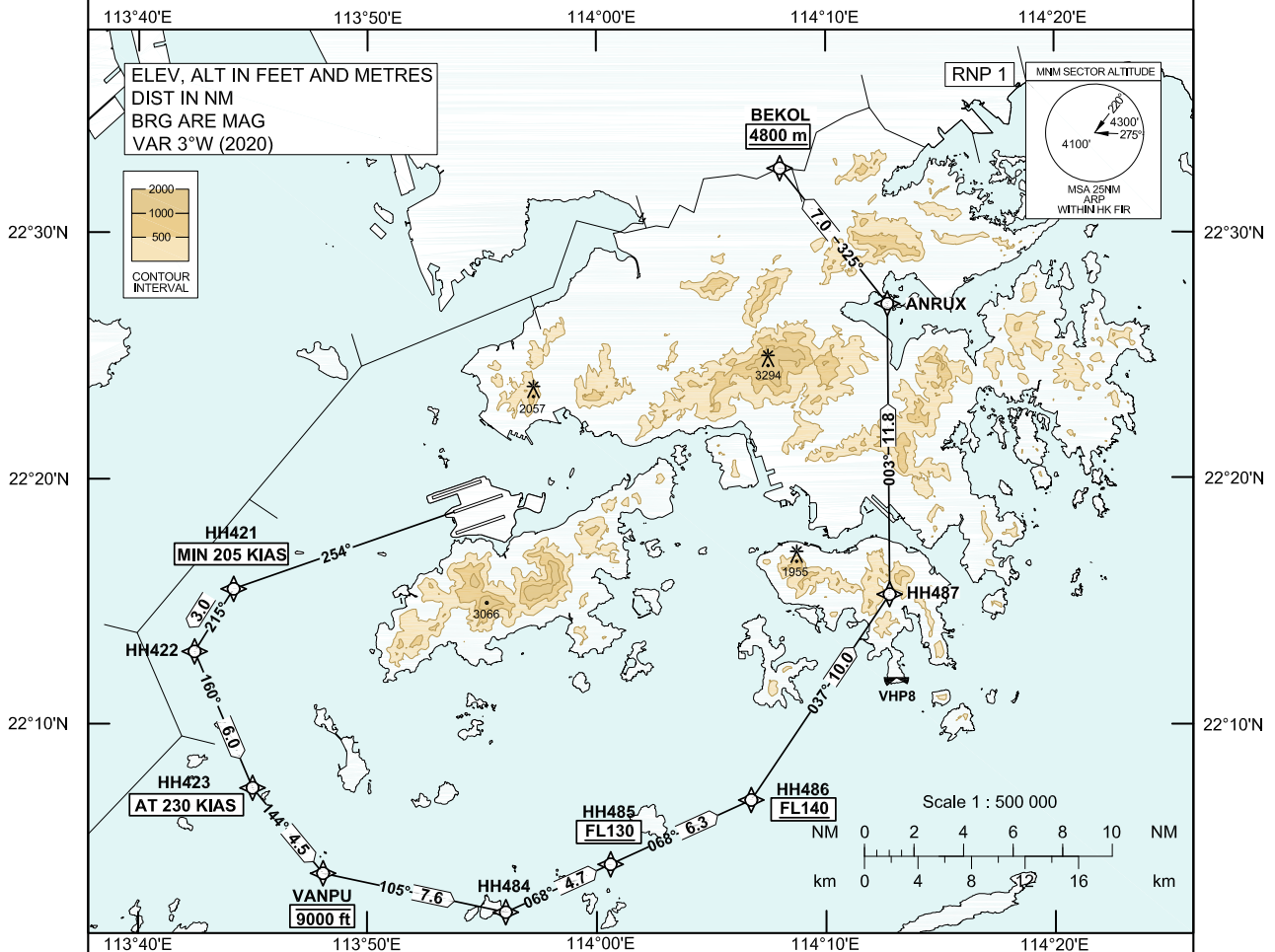


**STANDARD DEPARTURE CHART-  
INSTRUMENT (SID) - ICAO**

Transition Altitude	9 000 ft
Hong Kong Tower	118.2
Hong Kong Departure	123.8

**HONG KONG / Intl (VHHH)  
RNAV (GNSS) BEKOL 1D SID RWY 25C**

1. In the event that PBN performance ceases to comply with the requirements for RNP 1 after departure, pilots must notify ATC as soon as possible. ATC assistance would be provided as necessary.
2. Only specific categories of flights (e.g. SAR) as stated in GEN 1.5 para 3.5.3.5 are exempted from the RNP 1 requirement. These flights shall fly the contingency procedures as detailed in VHHH AD 2.22 para 2.2.3.5.



**BEKOL 1D SID RWY 25C**

**CLIMB REQUIREMENT**

Initial climb to 5 000 ft. Expect further climb when instructed by ATC. Comply with all the published altitude restrictions. If unable to comply with the vertical profile, pilot shall inform ATC prior to start-up.

**TERRAIN CLEARANCE**

Minimum climb gradient of 3.3% (201 ft/NM).

**SPEED RESTRICTION**

Speed restriction of 205 KIAS or greater at HH421 and 230 KIAS until HH423.

CHANGE: New procedure.

**FMC Database Coding Reference for Hong Kong RNAV<sub>(GNSS)</sub> SID****TABULAR DESCRIPTION: BEKOL 1D RWY 25C**

Serial Number	Path Descriptor	Waypoint Identifier	Fly-over	Course °M (°T)	Magnetic Variation	Distance (NM)	Turn Direction	Altitude (ft)	Speed (KIAS)	Navigation Specification
01	CF	HH421	-	254 (251)	+3.0	-	-	-	+205	RNP 1
02	TF	HH422	-	215 (212)	+3.0	3.0	-	-	-	RNP 1
03	TF	HH423	-	160 (157)	+3.0	6.0	-	-	@230	RNP 1
04	TF	VANPU	-	144 (141)	+3.0	4.5	-	-9000	-	RNP 1
05	TF	HH484	-	105 (102)	+3.0	7.6	-	-	-	RNP 1
06	TF	HH485	-	068 (065)	+3.0	4.7	-	+FL130	-	RNP 1
07	TF	HH486	-	068 (065)	+3.0	6.3	-	+FL140	-	RNP 1
08	TF	HH487	-	037 (034)	+3.0	10.0	-	-	-	RNP 1
09	TF	ANRUX	-	003 (000)	+3.0	11.8	-	-	-	RNP 1
10	TF	BEKOL	-	325 (322)	+3.0	7.0	-	+4800m	-	RNP 1

**WAYPOINT LIST**

BEKOL 1D RWY 25C		
Waypoint Identifier	Coordinates (WGS-84)	
HH421	22 15 31.13N	113 44 09.41E
HH422	22 12 58.53N	113 42 27.41E
HH423	22 07 26.10N	113 44 59.40E
VANPU	22 03 57.95N	113 48 03.85E
HH484	22 02 23.21N	113 56 01.92E
HH485	22 04 19.90N	114 00 35.87E
HH486	22 06 56.32N	114 06 43.85E
HH487	22 15 17.49N	114 12 46.60E
ANRUX	22 27 05.73N	114 12 41.76E
BEKOL	22 32 36.00N	114 08 00.00E