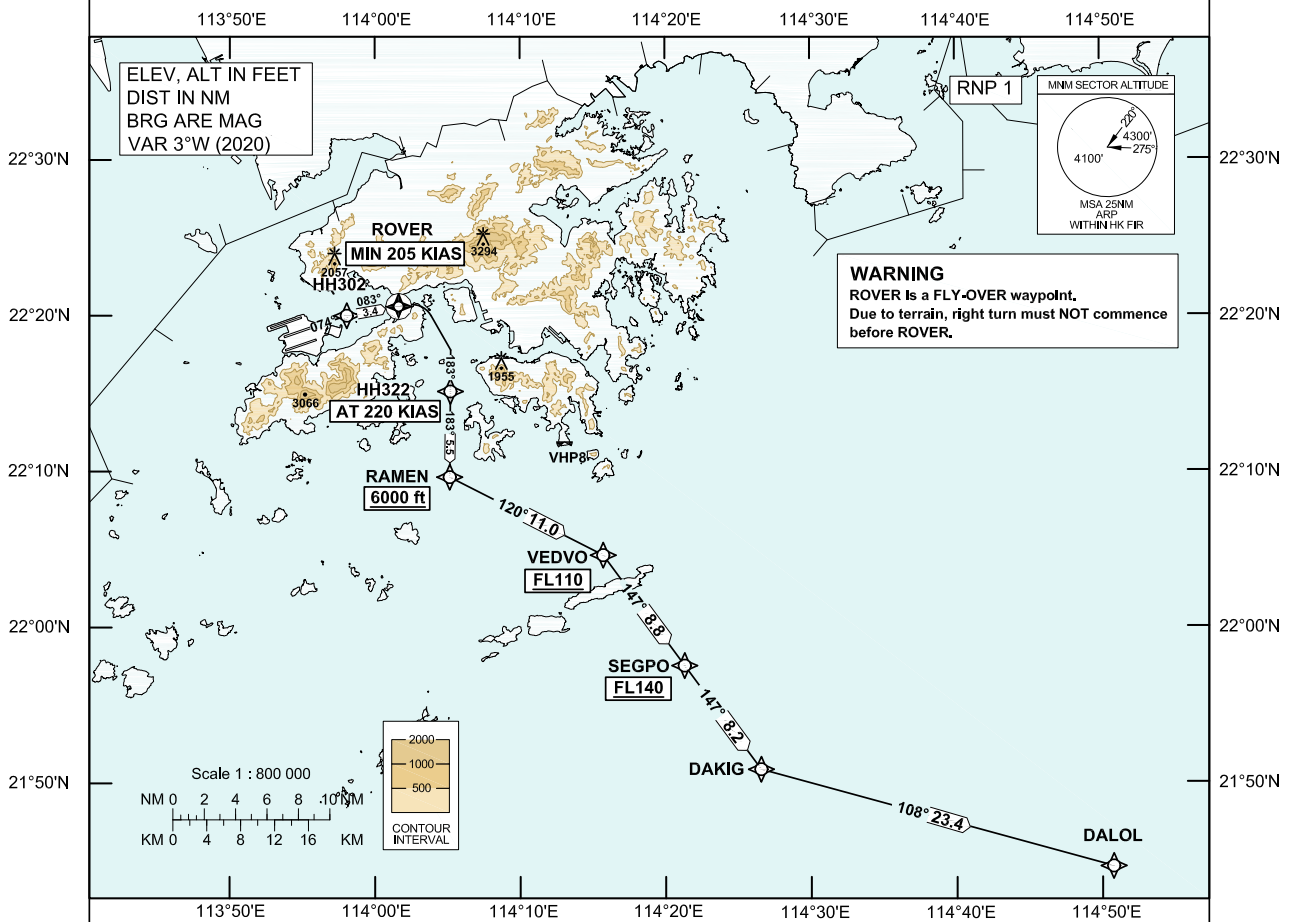


<p>STANDARD DEPARTURE CHART- INSTRUMENT (SID) - ICAO</p>	<table border="1" style="width: 100%; border-collapse: collapse;"> <tr> <td colspan="2" style="text-align: center;">Transition Altitude 9 000 ft</td> </tr> <tr> <td>Hong Kong Tower</td> <td style="text-align: right;">118.2</td> </tr> <tr> <td>Hong Kong Departure</td> <td style="text-align: right;">123.8</td> </tr> </table>	Transition Altitude 9 000 ft		Hong Kong Tower	118.2	Hong Kong Departure	123.8	<p style="text-align: center;">HONG KONG / Intl (VHHH) RNAV (GNSS) DALOL 1C SID RWY 07C</p>
Transition Altitude 9 000 ft								
Hong Kong Tower	118.2							
Hong Kong Departure	123.8							

1. In the event that PBN performance ceases to comply with the requirements for RNP 1 after departure, pilots must notify ATC as soon as possible. ATC assistance would be provided as necessary.
2. Only specific categories of flights (e.g. SAR) as stated in GEN 1.5 para 3.5.3.5 are exempted from the RNP 1 requirement. These flights shall fly the contingency procedures as detailed in VHHH AD 2.22 para 2.2.3.5.
3. ROVER is a **FLY-OVER** waypoint. All other waypoints are fly-by.



DALOL 1C SID RWY 07C

CLIMB REQUIREMENT
Initial climb to 5 000 ft. Expect further climb when instructed by ATC. Comply with all the published altitude restrictions. If unable to comply with the vertical profile, pilot shall inform ATC prior to start-up.

TERRAIN CLEARANCE
Minimum climb gradient of 3.8% (231 ft/NM) until passing 1 300 ft is required.

SPEED RESTRICTION
Speed restriction of 205 KIAS or greater at ROVER and 220 KIAS until HH322.

CHANGE: New procedure.

FMC Database Coding Reference for Hong Kong RNAV_(GNSS) SID**TABULAR DESCRIPTION: DALOL 1C RWY 07C**

Serial Number	Path Descriptor	Waypoint Identifier	Fly-over	Course °M (°T)	Magnetic Variation	Distance (NM)	Turn Direction	Altitude (ft)	Speed (KIAS)	Navigation Specification
01	CF	HH302	-	074 (071)	+3.0	-	-	-	-	RNP 1
02	TF	ROVER	Y	083 (080)	+3.0	3.4	-	-	+205	RNP 1
03	CF	HH322	-	183 (180)	+3.0	-	R	-	@220	RNP 1
04	TF	RAMEN	-	183 (180)	+3.0	5.5	-	+6000	-	RNP 1
05	TF	VEDVO	-	120 (117)	+3.0	11.0	-	+FL110	-	RNP 1
06	TF	SEGPO	-	147 (144)	+3.0	8.8	-	+FL140	-	RNP 1
07	TF	DAKIG	-	147 (144)	+3.0	8.2	-	-	-	RNP 1
08	TF	DALOL	-	108 (105)	+3.0	23.4	-	-	-	RNP 1

WAYPOINT LIST

DALOL 1C RWY 07C		
Waypoint Identifier	Coordinates (WGS-84)	
HH302	22 20 00.43N	113 58 04.56E
ROVER	22 20 35.58N	114 01 39.12E
HH322	22 15 08.88N	114 05 12.88E
RAMEN	22 09 39.22N	114 05 09.89E
VEDVO	22 04 38.19N	114 15 43.05E
SEGPO	21 57 32.77N	114 21 18.59E
DAKIG	21 50 52.90N	114 26 33.33E
DALOL	21 44 36.90N	114 50 45.34E