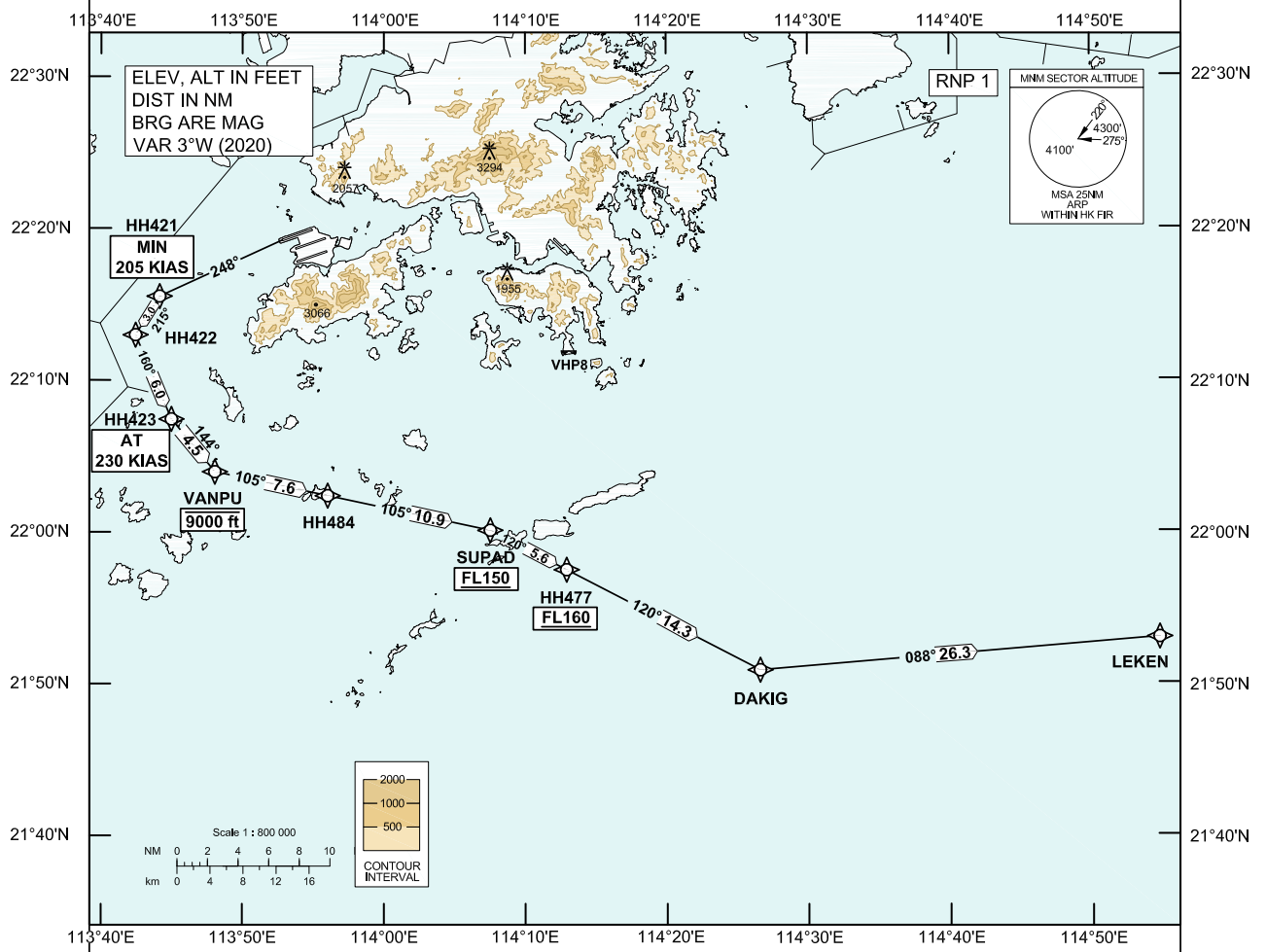


<b>STANDARD DEPARTURE CHART- INSTRUMENT (SID) - ICAO</b>	<table border="1" style="width: 100%; border-collapse: collapse;"> <tr><td>Transition Altitude</td><td>9 000 ft</td></tr> <tr><td>Hong Kong Tower</td><td>118.7</td></tr> <tr><td>Hong Kong Departure</td><td>123.8</td></tr> </table>	Transition Altitude	9 000 ft	Hong Kong Tower	118.7	Hong Kong Departure	123.8	<b>HONG KONG / Intl (VHHH) RNAV (GNSS) LEKEN 1F SID RWY 25R</b>
Transition Altitude	9 000 ft							
Hong Kong Tower	118.7							
Hong Kong Departure	123.8							

1. In the event that PBN performance ceases to comply with the requirements for RNP 1 after departure, pilots must notify ATC as soon as possible. ATC assistance would be provided as necessary.
2. Only specific categories of flights (e.g. SAR) as stated in GEN 1.5 para 3.5.3.5 are exempted from the RNP 1 requirement. These flights shall fly the contingency procedures as detailed in VHHH AD 2.22 para 2.2.3.5.



**LEKEN 1F SID RWY 25R**

**CLIMB REQUIREMENT**  
Initial climb to 5 000 ft. Expect further climb when instructed by ATC. Comply with all the published altitude restrictions. If unable to comply with the vertical profile, pilot shall inform ATC prior to start-up.

**TERRAIN CLEARANCE**  
Minimum climb gradient of 3.3% (201 ft/NM).

**SPEED RESTRICTION**  
Speed restriction of 205 KIAS or greater at HH421 and 230 KIAS until HH423.

CHANGE: New procedure.

**FMC Database Coding Reference for Hong Kong RNAV<sub>(GNSS)</sub> SID****TABULAR DESCRIPTION: LEKEN 1F RWY 25R**

Serial Number	Path Descriptor	Waypoint Identifier	Fly-over	Course °M (°T)	Magnetic Variation	Distance (NM)	Turn Direction	Altitude (ft)	Speed (KIAS)	Navigation Specification
01	CF	HH421	-	248 (245)	+3.0	-	-	-	+205	RNP 1
02	TF	HH422	-	215 (212)	+3.0	3.0	-	-	-	RNP 1
03	TF	HH423	-	160 (157)	+3.0	6.0	-	-	@230	RNP 1
04	TF	VANPU	-	144 (141)	+3.0	4.5	-	-9000	-	RNP 1
05	TF	HH484	-	105 (102)	+3.0	7.6	-	-	-	RNP 1
06	TF	SUPAD	-	105 (102)	+3.0	10.9	-	+FL150	-	RNP 1
07	TF	HH477	-	120 (117)	+3.0	5.6	-	+FL160	-	RNP 1
08	TF	DAKIG	-	120 (117)	+3.0	14.3	-	-	-	RNP 1
09	TF	LEKEN	-	088 (085)	+3.0	26.3	-	-	-	RNP 1

**WAYPOINT LIST**

LEKEN 1F RWY 25R		
Waypoint Identifier	Coordinates (WGS-84)	
HH421	22 15 31.13N	113 44 09.41E
HH422	22 12 58.53N	113 42 27.41E
HH423	22 07 26.10N	113 44 59.40E
VANPU	22 03 57.95N	113 48 03.85E
HH484	22 02 23.21N	113 56 01.92E
SUPAD	22 00 05.99N	114 07 30.72E
HH477	21 57 29.80N	114 12 54.07E
DAKIG	21 50 52.90N	114 26 33.33E
LEKEN	21 53 01.06N	114 54 44.95E