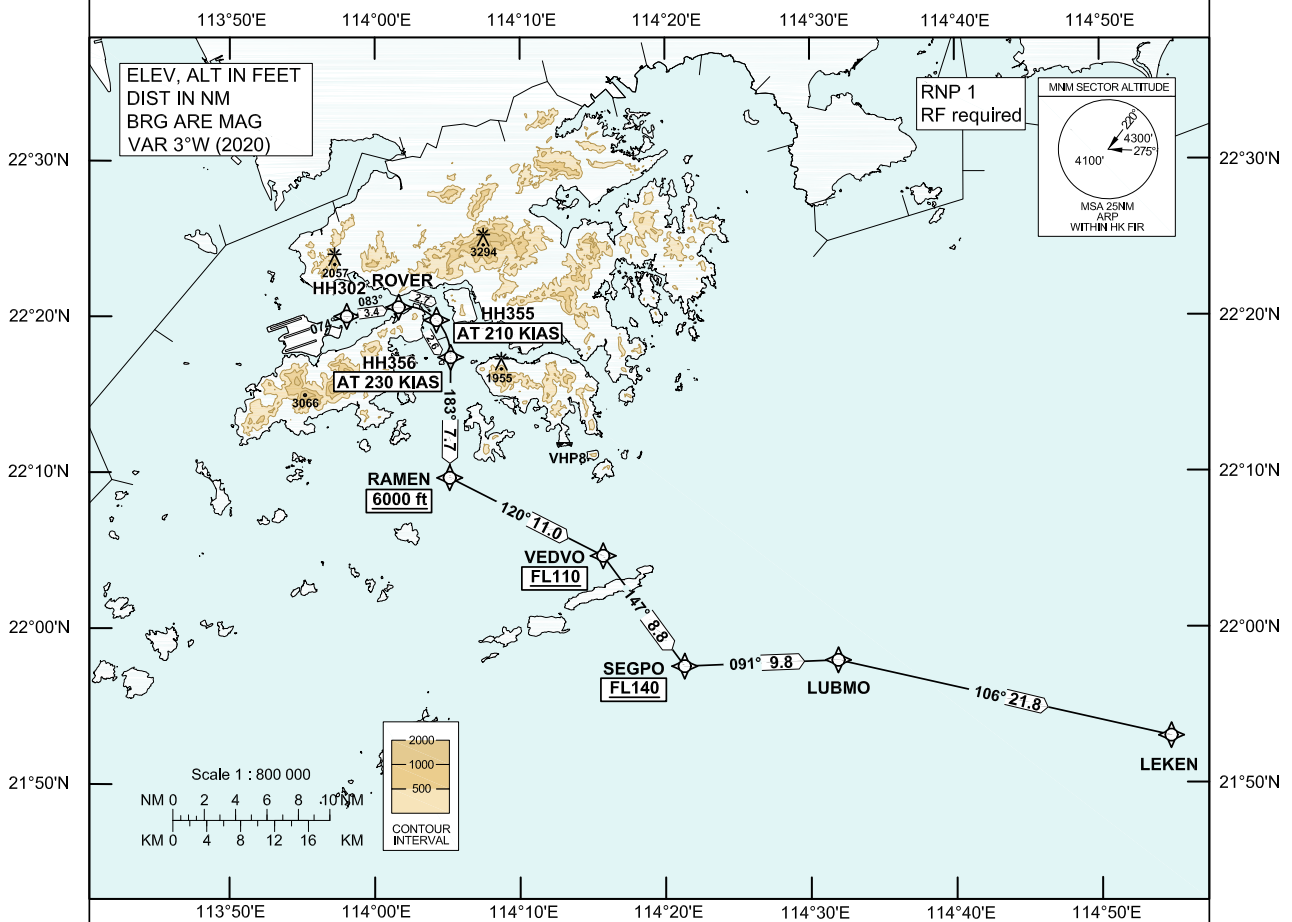


STANDARD DEPARTURE CHART- INSTRUMENT (SID) - ICAO	<table border="1" style="width: 100%; border-collapse: collapse;"> <tr> <td colspan="2" style="text-align: center;">Transition Altitude 9 000 ft</td> </tr> <tr> <td>Hong Kong Tower</td> <td style="text-align: right;">118.2</td> </tr> <tr> <td>Hong Kong Departure</td> <td style="text-align: right;">123.8</td> </tr> </table>	Transition Altitude 9 000 ft		Hong Kong Tower	118.2	Hong Kong Departure	123.8	HONG KONG / Intl (VHHH) RNAV (GNSS) LEKEN 1Y SID RWY 07C
Transition Altitude 9 000 ft								
Hong Kong Tower	118.2							
Hong Kong Departure	123.8							

1. In the event that PBN performance ceases to comply with the requirements for RNP 1 after departure, pilots must notify ATC as soon as possible. ATC assistance would be provided as necessary.
2. Only specific categories of flights (e.g. SAR) as stated in GEN 1.5 para 3.5.3.5 are exempted from the RNP 1 requirement. These flights shall fly the contingency procedures as detailed in VHHH AD 2.22 para 2.2.3.5.
3. **Radius-to-fix (RF) leg is required.** Aircraft shall have RF capability as stipulated in the Aircraft Flight Manual or its FMS manual. For aircraft without RF capability, pilot shall request the corresponding non-RF SID procedure from Hong Kong Delivery.



LEKEN 1Y SID RWY 07C

CLIMB REQUIREMENT
Initial climb to 5 000 ft. Expect further climb when instructed by ATC. Comply with all the published altitude restrictions. If unable to comply with the vertical profile, pilot shall inform ATC prior to start-up.

TERRAIN CLEARANCE
Minimum climb gradient of 3.4% (207 ft/NM) until passing 1 200 ft is required.

SPEED RESTRICTION
Speed restriction of 210 KIAS at HH355 and 230 KIAS at HH356.

CHANGE: New procedure.

FMC Database Coding Reference for Hong Kong RNAV_(GNSS) SID**TABULAR DESCRIPTION: LEKEN 1Y RWY 07C**

Serial Number	Path Descriptor	Waypoint Identifier	Fly-over	Course °M (°T)	Magnetic Variation	Distance (NM)	Turn Direction	Altitude (ft)	Speed (KIAS)	Navigation Specification
01	CF	HH302	-	074 (071)	+3.0	-	-	-	-	RNP 1
02	TF	ROVER	-	083 (080)	+3.0	3.4	-	-	-	RNP 1
03	RF Centre: HH955 r=2.642 NM	HH355	-	-	+3.0	2.7	R	-	@210	RNP 1
04	RF Centre: HH956 r=3.494 NM	HH356	-	-	+3.0	2.6	R	-	@230	RNP 1
05	TF	RAMEN	-	183 (180)	+3.0	7.7	-	+6000	-	RNP 1
06	TF	VEDVO	-	120 (117)	+3.0	11.0	-	+FL110	-	RNP 1
07	TF	SEGPO	-	147 (144)	+3.0	8.8	-	+FL140	-	RNP 1
08	TF	LUBMO	-	091 (088)	+3.0	9.8	-	-	-	RNP 1
09	TF	LEKEN	-	106 (103)	+3.0	21.8	-	-	-	RNP 1

WAYPOINT LIST

LEKEN 1Y RWY 07R		
Waypoint Identifier	Coordinates (WGS-84)	
HH302	22 20 00.43N	113 58 04.56E
ROVER	22 20 35.58N	114 01 39.12E
HH355	22 19 45.97N	114 04 15.23E
HH356	22 17 22.57N	114 05 14.10E
RAMEN	22 09 39.22N	114 05 09.89E
VEDVO	22 04 38.19N	114 15 43.05E
SEGPO	21 57 32.77N	114 21 18.59E
LUBMO	21 57 55.24N	114 31 52.98E
LEKEN	21 53 01.06N	114 54 44.95E
RF Arc Centre Identifier	Coordinates (WGS-84)	
HH955	22 17 58.85N	114 02 08.75E
HH956	22 17 24.31N	114 01 27.97E