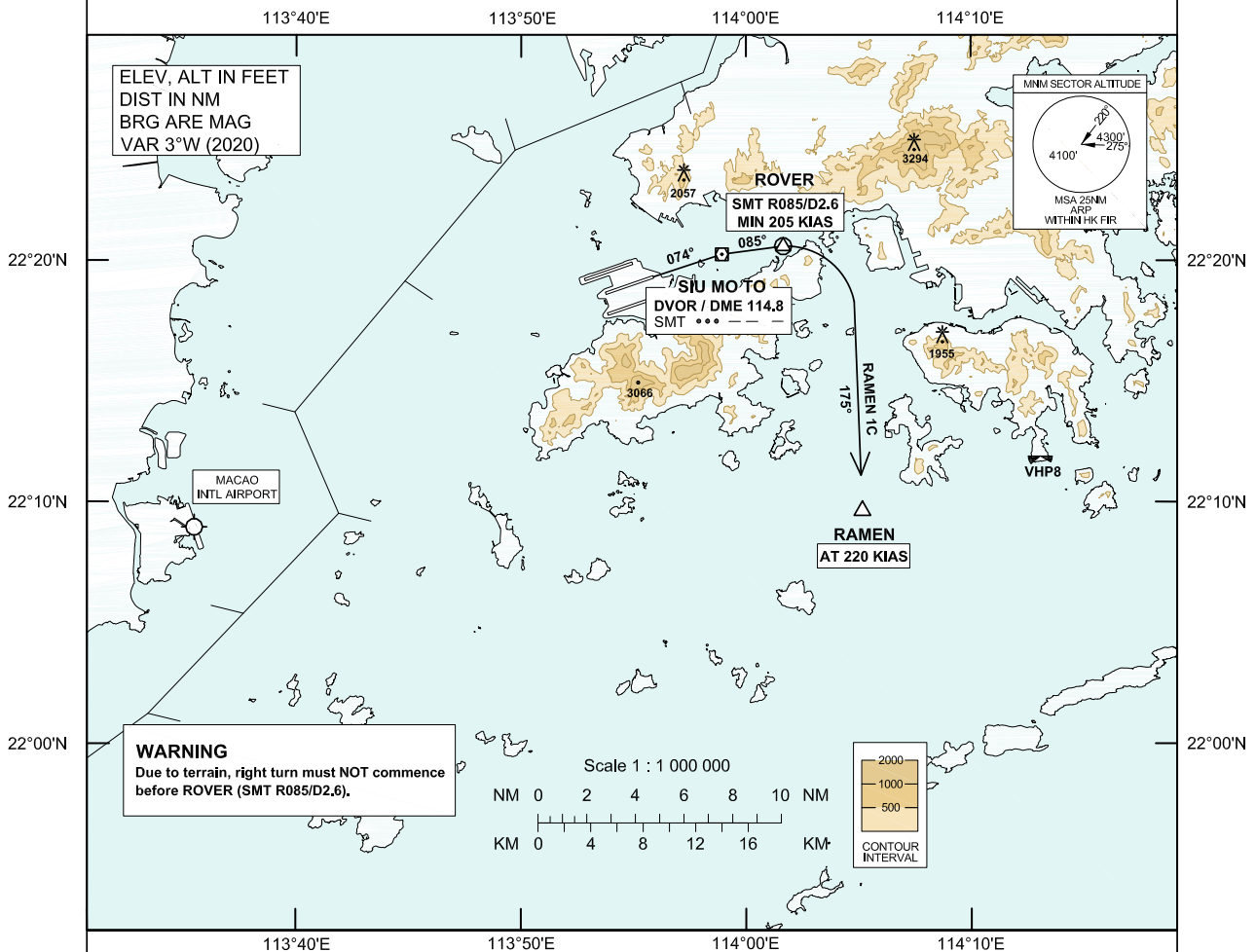


**STANDARD DEPARTURE CHART-
INSTRUMENT (SID) - ICAO**

Transition Altitude 9 000 ft
Hong Kong Tower 118.2
Hong Kong Departure 123.8

**HONG KONG / Intl (VHHH)
RAMEN 1C SID RWY 07C**

1. This is contingency procedure exclusive for flights exempted from RNP1 requirement as specified in GEN 1.5 para 3.5.3.5.
2. DME is required.
3. To maintain terrain clearance, **DO NOT** turn right before passing ROVER (SMT R085/D2.6).



RAMEN 1C SID RWY 07C

CONVENTIONAL PROCEDURE

Track 074° SMT DVOR. Depart SMT DVOR on RDL085 to ROVER (SMT R085/D2.6). At ROVER, turn right to track 175°M, request radar vectors to RAMEN.

CLIMB REQUIREMENT

Initial climb to 5 000 ft. Expect further climb when instructed by ATC.

TERRAIN CLEARANCE

Minimum climb gradient of 3.8% (231 ft/NM) until leaving 1 300 ft is required.

SPEED RESTRICTION

Speed restriction of 205 KIAS or greater at ROVER and 220 KIAS until RAMEN.

CHANGE: New Procedure.

RWY 07C RAMEN 1C DEPARTURE**NAVIGATION AIDS**

Navaid/Ident	Frequency	Coordinates		Remarks
SMT DVOR	114.8 MHz	22 20 15.43N	113 58 55.46E	Co-located
SMT DME	CH 95X			

WAYPOINT LIST

RAMEN 1C RWY 07C			
Waypoint Identifier	Coordinates (WGS-84)		Cross Reference from Navaid
ROVER	22 20 35.58N	114 01 39.12E	SMT RDL 085 DME 2.6 NM
RAMEN	22 09 39.22N	114 05 09.89E	-
SMT	22 20 15.43N	113 58 55.46E	SMT DVOR/DME