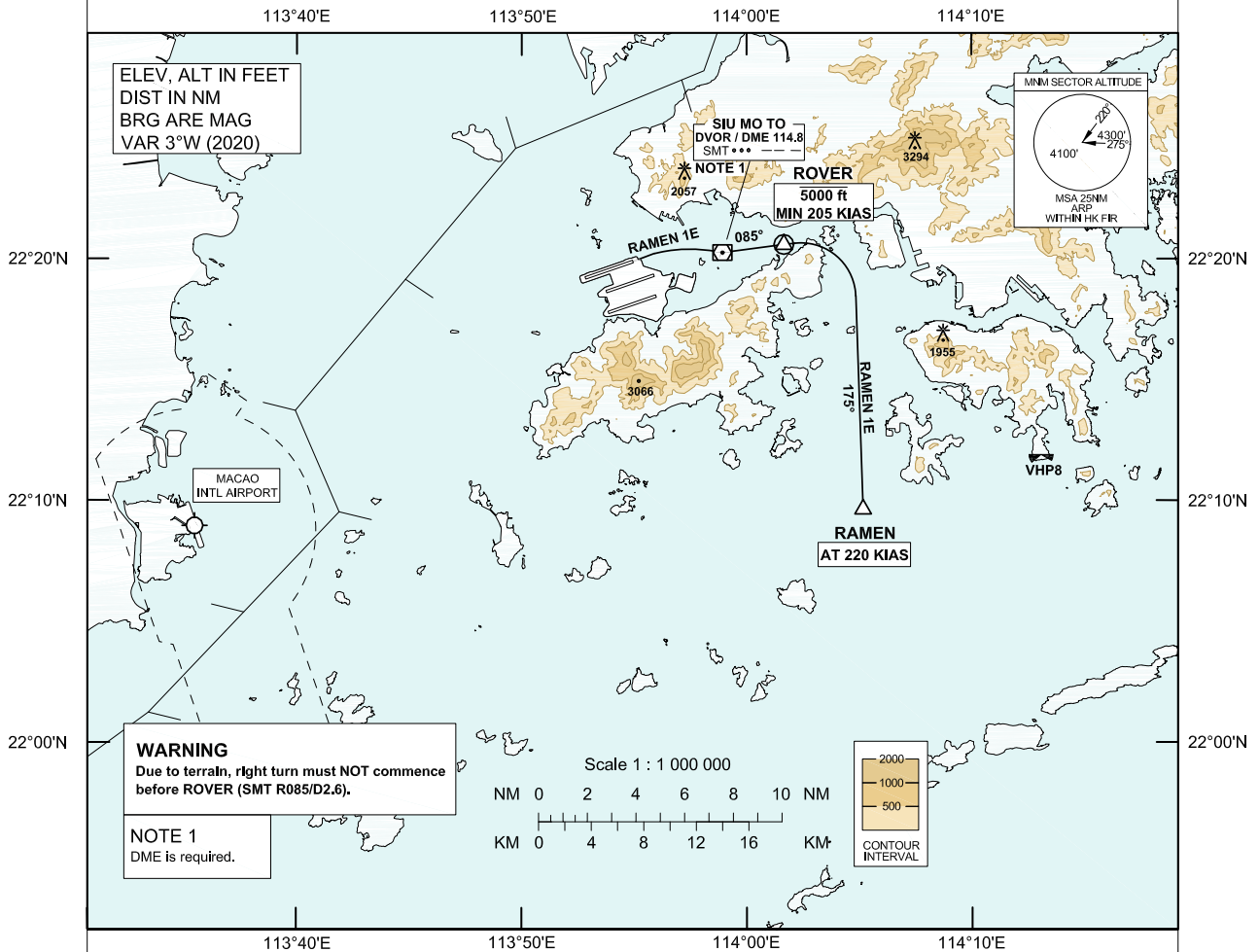


<b>STANDARD DEPARTURE CHART- INSTRUMENT (SID) - ICAO</b>	Transition Altitude 9 000 ft	<b>HONG KONG / Intl (VHHH) RAMEN 1E SID RWY 07L</b>
	Hong Kong Tower 118.7	
	Hong Kong Departure 123.8	

1. This is contingency procedure exclusive for flights exempted from RNP1 requirement as specified in GEN 1.5 para 3.5.3.5.
2. DME is required.
3. To maintain terrain clearance, **DO NOT** turn right before passing ROVER (SMT R085/D2.6).



**RAMEN 1E SID RWY 07L**

**CONVENTIONAL PROCEDURE**  
 Climb straight ahead to 430ft. Then, turn right direct to SMT. At SMT, turn left to track 085° MAG to ROVER (SMT R085/D2.6). At ROVER, turn right to track 175° MAG, request radar vectors to RAMEN.

**CLIMB REQUIREMENT**  
 Initial climb to 5 000 ft. Expect further climb when instructed by ATC. Cross ROVER at 5 000 ft or below.

**TERRAIN CLEARANCE**  
 Minimum climb gradient of 3.4% (207 ft/NM) until leaving 1400 ft is required.

**SPEED RESTRICTION**  
 Speed restriction of 205 KIAS or greater at ROVER and 220 KIAS until RAMEN.

CHANGE: Runway 07C/25C reopened.

**RWY 07L RAMEN 1E DEPARTURE****NAVIGATION AIDS**

Navaid/Ident	Frequency	Coordinates	Remarks
SMT DVOR	114.8 MHz	22 20 15.43N 113 58 55.46E	Co-located
SMT DME	CH 95X		

**WAYPOINT LIST**

<b>RAMEN 2E RWY 07L</b>			
Waypoint Identifier	Coordinates (WGS-84)		Cross Reference from Navaid
ROVER	22 20 35.58N	114 01 39.12E	SMT RDL 085 DME 2.6 NM
RAMEN	22 09 39.22N	114 05 09.89E	-
SMT	22 20 15.43N	113 58 55.46E	SMT DVOR/DME