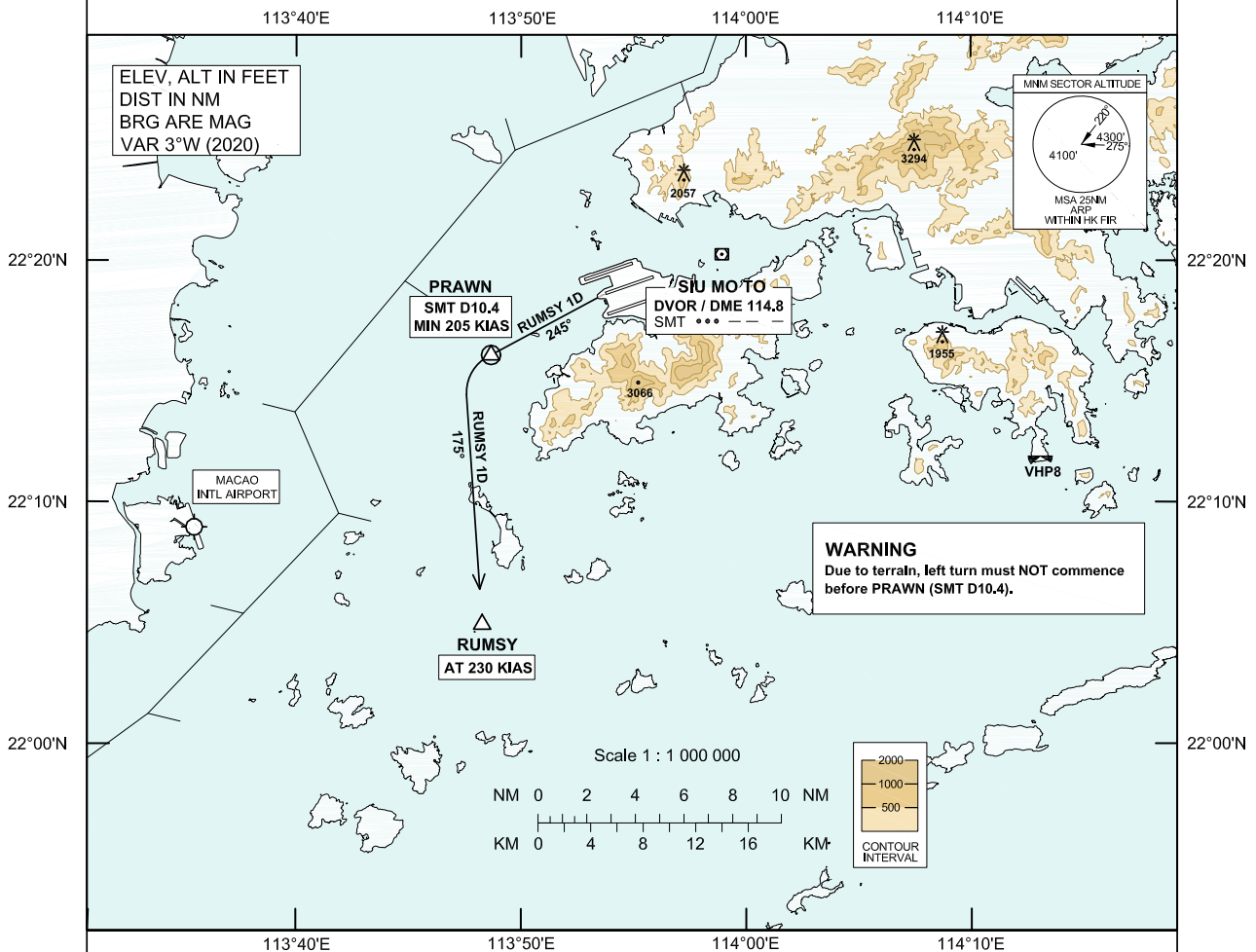


**STANDARD DEPARTURE CHART-
INSTRUMENT (SID) - ICAO**

Transition Altitude	9 000 ft
Hong Kong Tower	118.2
Hong Kong Departure	123.8

**HONG KONG / Intl (VHHH)
RUMSY 1D SID RWY 25C**

1. This is contingency procedure exclusive for flights exempted from RNP1 requirement as specified in GEN 1.5 para 3.5.3.5.
2. DME is required.
3. To maintain terrain clearance, **DO NOT** turn left before passing the departure end of runway and **DO NOT** turn left before passing PRAWN (SMT D10.4).



RUMSY 1D SID RWY 25C

CONVENTIONAL PROCEDURE

Climb straight ahead to 430 ft. Then track 245° to PRAWN (SMT D10.4). At PRAWN turn left track 175°, request radar vectors to RUMSY.

CLIMB REQUIREMENT

Initial climb to 5 000 ft. Expect further climb when instructed by ATC.

TERRAIN CLEARANCE

Minimum climb gradient of 3.3% (201 ft/NM).

SPEED RESTRICTION

Speed restriction of 205 KIAS or greater at PRAWN and 230 KIAS until RUMSY.

CHANGE: New Procedure.

RWY 25C RUMSY 1D DEPARTURE**NAVIGATION AIDS**

Navaid/Ident	Frequency	Coordinates	Remarks
SMT DVOR	114.8 MHz	22 20 15.43N 113 58 55.46E	Co-located
SMT DME	CH 95X		

WAYPOINT LIST

RUMSY 1D RWY 25C			
Waypoint Identifier	Coordinates (WGS-84)		Cross Reference from Navaid
PRAWN	22 16 05.40N	113 48 40.10E	SMT DME 10.4NM
RUMSY	22 04 56.94N	113 48 16.79E	-