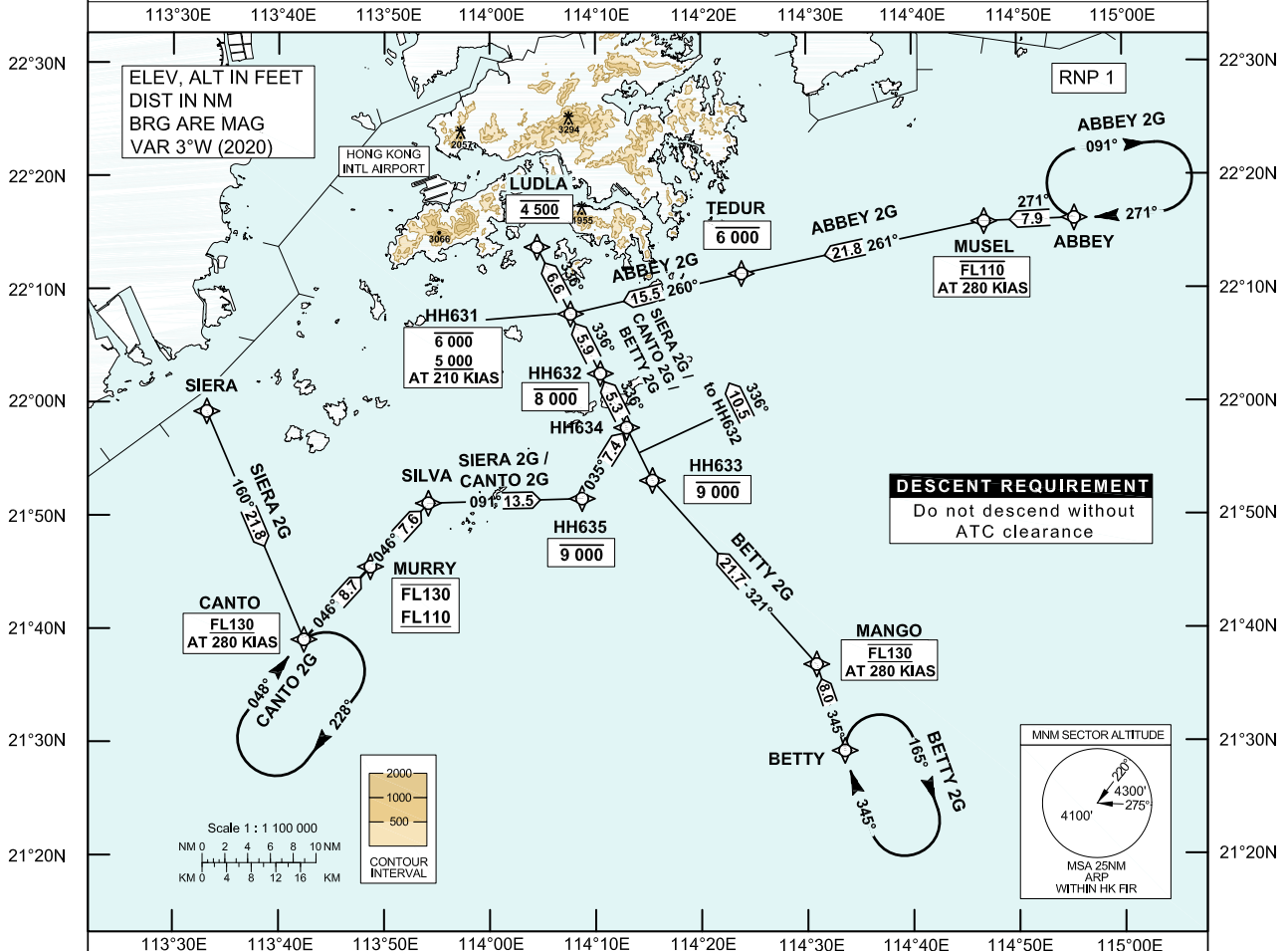


STANDARD ARRIVAL CHART- INSTRUMENT (STAR) - ICAO Transition Altitude 9 000 ft

HONG KONG / Intl (VHHH)
 RNAV (GNSS) ABBEY 2G / BETTY 2G STAR
 RNAV (GNSS) CANTO 2G / SIERA 2G STAR
 RWY 25L/25C/25R

HONG KONG RADAR 126.3 (BETTY 2G)
 HONG KONG RADAR 126.5 (ABBEEY 2G)
 HONG KONG RADAR 127.55 (CANTO 2G / SIERA 2G)

1. For RNAV (GNSS) STAR, aircraft must be approved by State of Registry in accordance with ICAO RNP 1 standard or equivalent (see GEN 1.5 para 3.5.3). Carriage of certified GNSS receiver is mandatory.
2. In the event that PBN performance ceases to comply with the requirements for RNP 1 inflight, pilots must notify ATC as soon as possible. ATC assistance would be provided as necessary.



ABBEEY 2G STAR RWY 25L/25C/25R	BETTY 2G STAR RWY 25L/25C/25R
Expect RNP AR APCH. Descend as directed by ATC.	Expect RNP AR APCH. Descend as directed by ATC.
CANTO 2G STAR RWY 25L/25C/25R	SIERA 2G STAR RWY 25L/25C/25R
Expect RNP AR APCH. Descend as directed by ATC.	Expect RNP AR APCH. Descend as directed by ATC.

DESCENT REQUIREMENT
 Cross LUDLA at 4 500 ft.
ABBEEY 2G Cross MUSEL at FL110.
BETTY 2G Cross MANGO at FL130.
CANTO 2G / SIERA 2G Cross CANTO FL130 or above. Cross MURRY between FL130 and FL110.
DO NOT DESCEND WITHOUT ATC CLEARANCE.

SPEED CONTROL
 Aircraft shall fly at 280 KIAS by MUSEL / MANGO / CANTO, or as directed by ATC.

HOLDING
 The holding pattern is established at ABBEEY / BETTY / CANTO. If holding is required, each flight will be instructed individually.

ALTERNATIVE HOLDING
 In order to provide traffic management flexibility during peak periods of arrival or adverse weather situation in Hong Kong TMA, traffic may be instructed to hold at BAKER or other terminal holdings (see ENR 3.6) as directed by ATC.

LOSS OF COMMUNICATION
 In the event of a loss of communication aircraft shall comply with the descent requirement and the STAR track above. Thence: Maintain FL110 (from MUSEL) or FL130 (from MANGO or CANTO) to LUDLA. Join LUDLA holding pattern and descend to 4 500 ft in the hold, then carry out the appropriate RNP AR APCH.

CHANGE: New Procedures.

FMC Database Coding Reference for Hong Kong RNAV_(GNSS) STARs

Designator: ABBEY 2G Runway 25L / Runway 25C / Runway 25R

Serial Number	Path Descriptor	Waypoint Identifier	Fly-over	Course/Track (°M)	Magnetic Variation	Distance (NM)	Turn Dir	Altitude (ft)	Speed (KIAS)	Navigation Specification
01	IF	ABBEY	-	-	+3.0	-	-	-	-	RNP 1
02	TF	MUSEL	-	271	+3.0	7.9	-	@FL110	@280	RNP 1
03	TF	TEDUR	-	261	+3.0	21.8	-	-6000	-	RNP 1
04	TF	HH631	-	260	+3.0	15.5	-	-6000 +5000	@210	RNP 1
05	TF	LUDLA	-	336	+3.0	6.6	-	@4500	-	RNP 1

Designator: BETTY 2G Runway 25L / Runway 25C / Runway 25R

Serial Number	Path Descriptor	Waypoint Identifier	Fly-over	Course/Track (°M)	Magnetic Variation	Distance (NM)	Turn Dir	Altitude (ft)	Speed (KIAS)	Navigation Specification
01	IF	BETTY	-	-	+3.0	-	-	-	-	RNP 1
02	TF	MANGO	-	345	+3.0	8.0	-	@FL130	@280	RNP 1
03	TF	HH633	-	321	+3.0	21.7	-	-9000	-	RNP 1
04	TF	HH632	-	336	+3.0	10.5	-	-8000	-	RNP 1
05	TF	HH631	-	336	+3.0	5.9	-	-6000 +5000	@210	RNP 1
06	TF	LUDLA	-	336	+3.0	6.6	-	@4500	-	RNP 1

Designator: CANTO 2G Runway 25L / Runway 25C / Runway 25R

Serial Number	Path Descriptor	Waypoint Identifier	Fly-over	Course/Track (°M)	Magnetic Variation	Distance (NM)	Turn Dir	Altitude (ft)	Speed (KIAS)	Navigation Specification
01	IF	CANTO	-	-	+3.0	-	-	+FL130	@280	RNP 1
02	TF	MURRY	-	046	+3.0	8.7	-	-FL130 +FL110	-	RNP 1
03	TF	SILVA	-	046	+3.0	7.6	-	-	-	RNP 1
04	TF	HH635	-	091	+3.0	13.5	-	-9000	-	RNP 1
05	TF	HH634	-	035	+3.0	7.4	-	-	-	RNP 1
06	TF	HH632	-	336	+3.0	5.3	-	-8000	-	RNP 1
07	TF	HH631	-	336	+3.0	5.9	-	-6000 +5000	@210	RNP 1
08	TF	LUDLA	-	336	+3.0	6.6	-	@4500	-	RNP 1

Designator: SIERA 2G Runway 25L / Runway 25C / Runway 25R

Serial Number	Path Descriptor	Waypoint Identifier	Fly-over	Course/Track (°M)	Magnetic Variation	Distance (NM)	Turn Dir	Altitude (ft)	Speed (KIAS)	Navigation Specification
01	IF	SIERA	-	-	+3.0	-	-	-	-	RNP 1
02	TF	CANTO	-	160	+3.0	21.8	-	+FL130	@280	RNP 1
03	TF	MURRY	-	046	+3.0	8.7	L	-FL130 +FL110	-	RNP 1
04	TF	SILVA	-	046	+3.0	7.6	-	-	-	RNP 1
05	TF	HH635	-	091	+3.0	13.5	-	-9000	-	RNP 1
06	TF	HH634	-	035	+3.0	7.4	-	-	-	RNP 1
07	TF	HH632	-	336	+3.0	5.3	-	-8000	-	RNP 1
08	TF	HH631	-	336	+3.0	5.9	-	-6000 +5000	@210	RNP 1
09	TF	LUDLA	-	336	+3.0	6.6	-	@4500	-	RNP 1

Waypoint Coordinates

Waypoint Identifier	Coordinates (WGS-84)
ABBEY	22 16 11.00N 114 55 25.92E
BETTY	21 29 10.82N 114 33 31.92E
CANTO	21 39 02.63N 113 42 25.09E
MANGO	21 36 49.00N 114 30 53.00E
MUSEL	22 15 53.99N 114 46 52.13E
MURRY	21 45 28.37N 113 48 41.97E
SILVA	21 51 04.50N 113 54 10.88E
SIERA	21 59 12.00N 113 33 12.00E

Waypoint Identifier	Coordinates (WGS-84)
LUDLA	22 13 40.79N 114 04 28.75E
TEDUR	22 11 18.77N 114 23 51.26E
HH631	22 07 46.57N 114 07 38.63E
HH632	22 02 30.12N 114 10 28.02E
HH633	21 53 03.75N 114 15 23.47E
HH634	21 57 44.18N 114 12 57.27E
HH635	21 51 28.24N 114 08 44.19E
-	-